

STIM1 Rabbit pAb

Catalog Number: bs-8526R

Target Protein: STIM1

Concentration: 1mg/ml

Form: Liquid

Host: Rabbit

Clonality: Polyclonal

Isotype: IgG

Applications: IHC-P (1:100-500), IHC-F (1:100-500), IF (1:50-200)

Reactivity: Rat (predicted:Human, Mouse, Rabbit, Pig, Cow, Chicken, Dog, Horse)

Predicted MW: 75 kDa

Entrez Gene: 6786

Swiss Prot: Q13586

Source: KLH conjugated synthetic peptide derived from human STIM1: 85-180/685.

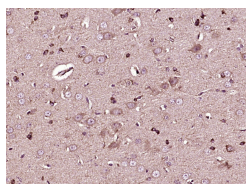
Purification: affinity purified by Protein A

Storage: 0.01M TBS (pH7.4) with 1% BSA, 0.02% Proclin300 and 50% Glycerol.

Shipped at 4°C. Store at -20°C for one year. Avoid repeated freeze/thaw cycles.

Background: Plays a role in mediating Ca(2+) influx following depletion of intracellular Ca(2+) stores. Acts as Ca(2+) sensor in the endoplasmic reticulum via its EF-hand domain. Upon Ca(2+) depletion, translocates from the endoplasmic reticulum to the plasma membrane where it activates the Ca(2+) release-activated Ca(2+) (CRAC) channel subunit, TMEM142A/Orai1.

VALIDATION IMAGES



Paraformaldehyde-fixed, paraffin embedded (Rat brain); Antigen retrieval by boiling in sodium citrate buffer (pH6.0) for 15min; Block endogenous peroxidase by 3% hydrogen peroxide for 20 minutes; Blocking buffer (normal goat serum) at 37°C for 30min; Antibody incubation with (STIM1) Polyclonal Antibody, Unconjugated (bs-8526R) at 1:400 overnight at 4°C, followed by operating according to SP Kit(Rabbit) (sp-0023) instructions and DAB staining.

PRODUCT SPECIFIC PUBLICATIONS

[IF=3.2] Sweed Dina. et al. STIM1/SOX2 proteins are co-expressed in the tumor and microenvironmental stromal cells of pancreatic ductal adenocarcinoma and ampullary carcinoma. WORLD J SURG ONCOL. 2024 Dec;22(1):1-11 IHC ; Human . 38532463