

**bs-5792R****[ Primary Antibody ]****MCPIP1 Rabbit pAb****BioSS**  
ANTIBODIES

www.bioss.com.cn

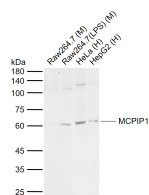
sales@bioss.com.cn

techsupport@bioss.com.cn

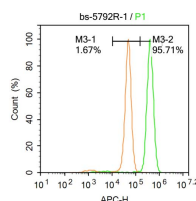
400-901-9800

**DATASHEET****Host:** Rabbit**Isotype:** IgG**Clonality:** Polyclonal**GeneID:** 80149**SWISS:** Q5D1E8**Target:** MCPIP1**Immunogen:** KLH conjugated synthetic peptide derived from human MCPIP1: 201-300/599.**Purification:** affinity purified by Protein A**Concentration:** 1mg/ml**Storage:** 0.01M TBS (pH7.4) with 1% BSA, 0.02% Proclin300 and 50% Glycerol.

Shipped at 4°C. Store at -20°C for one year. Avoid repeated freeze/thaw cycles.

**Background:** Has RNase activity and selectively degrades specific target mRNA species. Modulates the immune response and inflammation by regulating the decay of specific mRNA molecules. Recognizes the 3'-untranslated region (UTR) of the mRNA for IL6, CALCR and IL12B. Required for normal decay of IL6 mRNA (By similarity). Triggers apoptosis and promotes angiogenesis in response to the binding of CCL2 to CCR2. Regulates expression of CDH12 and CHD19.**Applications:** WB (1:500-2000)**Flow-Cyt** (1ug/Test)**Reactivity:** Human, Mouse  
(predicted: Rat, Rabbit, Cow, Chicken, Dog, Horse)**Predicted MW.:** 66 kDa**Subcellular Location:** Cytoplasm ,Nucleus**VALIDATION IMAGES**

Sample: Lane 1: Mouse Raw264.7 cell lysates  
 Lane 2: Mouse Raw264.7 (LPS) cell lysates Lane  
 3: Human HeLa cell lysates Lane 4: Human  
 HepG2 cell lysates Primary: Anti-MCPIP1  
 (bs-5792R) at 1/1000 dilution Secondary:  
 IRDye800CW Goat Anti-Rabbit IgG at 1/20000  
 dilution Predicted band size: 66 kDa Observed  
 band size: 60 kDa



k control (Black line): HeLa (Black). Primary  
 Antibody (green line): Rabbit Anti-MCPIP1  
 antibody (bs-5792R) Dilution: 1µg /10<sup>6</sup> cells;  
 Isotype Control Antibody (orange line): Rabbit  
 IgG . Secondary Antibody (white blue line): Goat  
 anti-rabbit IgG-AF647 Dilution: 1µg /test.  
 Protocol The cells were fixed with 4% PFA  
 (10min at room temperature)and then  
 permeabilized with 90% ice-cold methanol for  
 20 min at room temperature. The cells were then  
 incubated in 5%BSA to block non-specific  
 protein-protein interactions for 30 min at -20°C  
 .Cells stained with Primary Antibody for 30 min  
 at room temperature. The secondary antibody  
 used for 40 min at room temperature.  
 Acquisition of 20,000 events was performed.