

bs-14081R**[Primary Antibody]****CSAG1 Rabbit pAb****Bioss**
ANTIBODIES

www.bioss.com.cn

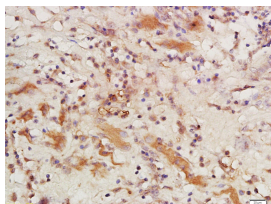
sales@bioss.com.cn

techsupport@bioss.com.cn

400-901-9800

— DATASHEET —

Host: Rabbit	Isotype: IgG	Applications: IHC-P (1:100-500) IHC-F (1:100-500) IF (1:100-500) Reactivity: Human Predicted MW.: 6.7 kDa Subcellular Location: Nucleus
Clonality: Polyclonal		
GeneID: 158511	SWISS: Q6PB30	
Target: CSAG1		
Immunogen: KLH conjugated synthetic peptide derived from human CSAG1: 22-78/78.		
Purification: affinity purified by Protein A		
Concentration: 1mg/ml		
Storage: 0.01M TBS (pH7.4) with 1% BSA, 0.02% Proclin300 and 50% Glycerol. Shipped at 4°C. Store at -20°C for one year. Avoid repeated freeze/thaw cycles.		
Background: This gene encodes a member of a family of tumor antigens. The protein is expressed in chondrosarcomas, but may also be expressed in normal tissues such as testis. Alternative splicing of this gene results in two transcript variants encoding the same protein. [provided by RefSeq, Jul 2008]		

— VALIDATION IMAGES —

Tissue/cell: human laryngocarcinoma; 4% Paraformaldehyde-fixed and paraffin-embedded; Antigen retrieval: citrate buffer (0.01M, pH 6.0), Boiling bathing for 15min; Block endogenous peroxidase by 3% Hydrogen peroxide for 30min; Blocking buffer (normal goat serum, C-0005) at 37°C for 20 min; Incubation: Anti-CSAG1 Polyclonal Antibody, Unconjugated(bs-14081R) 1:200, overnight at 4°C, followed by conjugation to the secondary antibody(SP-0023) and DAB(C-0010) staining