

bs-2584R**[Primary Antibody]****IGSF8 Rabbit pAb****BioSS**
ANTIBODIES

www.bioss.com.cn

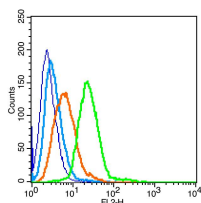
sales@bioss.com.cn

techsupport@bioss.com.cn

400-901-9800

— DATASHEET —

Host: Rabbit	Isotype: IgG	Applications: Flow-Cyt (1ug/Test)
Clonality: Polyclonal		Reactivity: Human (predicted: Mouse, Rat, Pig, Cow, Horse)
GeneID: 140559	SWISS: Q8R366	
Target: IGSF8		Predicted MW.: 62 kDa
Immunogen: KLH conjugated synthetic peptide derived from mouse IGSF8: 101-200/611. < Extracellular >		Subcellular Location: Cell membrane
Purification: affinity purified by Protein A		
Concentration: 1mg/ml		
Storage: 0.01M TBS (pH7.4) with 1% BSA, 0.02% Proclin300 and 50% Glycerol. Shipped at 4°C. Store at -20°C for one year. Avoid repeated freeze/thaw cycles.		
Background: IGSF8 is a 65kDa single-pass membrane protein that may play a key role in many of the functions attributed to CD81 and CD9, like Hepatitis C infection and oocyte fertilization. It is also believed that this protein acts as a negative regulator of cell motility (e.g. T-cell mobility, prostate cancer cell migration) and is involved in the regulation of neurite outgrowth and maintenance of the neural network in the brain.		

— VALIDATION IMAGES —

Blank control(blue):Raji (fixed with 2% paraformaldehyde (10 min)). Primary Antibody:Rabbit Anti-IGSF8 antibody(bs-2584R), Dilution: 1μg in 100 μL 1X PBS containing 0.5% BSA; Isotype Control Antibody: Rabbit IgG(orange), used under the same conditions); Secondary Antibody: Goat anti-rabbit IgG-PE(white blue), Dilution: 1:200 in 1 X PBS containing 0.5% BSA.