

bs-2607R**[Primary Antibody]****IL17RC Rabbit pAb****Bioss**
ANTIBODIES

www.bioss.com.cn

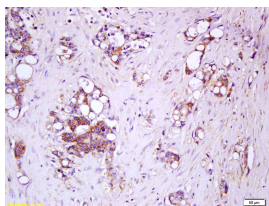
sales@bioss.com.cn

techsupport@bioss.com.cn

400-901-9800

— DATASHEET —

Host: Rabbit	Isotype: IgG	Applications: IHC-P (1:100-500) IHC-F (1:100-500) IF (1:100-500)
Clonality: Polyclonal		
GeneID: 84818	SWISS: Q8NAC3	
Target: IL17RC		Reactivity: Human (predicted: Mouse, Rat, Pig, Cow, Dog)
Immunogen: KLH conjugated synthetic peptide derived from human IL-17RC: 151-250/791. < Extracellular >		
Purification: affinity purified by Protein A		Predicted MW.: 85 kDa
Concentration: 1mg/ml		Subcellular Location: Cell membrane
Storage: 0.01M TBS (pH7.4) with 1% BSA, 0.02% Proclin300 and 50% Glycerol. Shipped at 4°C. Store at -20°C for one year. Avoid repeated freeze/thaw cycles.		
Background: IL17RC is a single pass transmembrane protein that shares limited similarity with the interleukin 17 receptor. It is widely expressed in non leukocyte tissues and forms a heteromeric receptor for IL17 with IL17RA. At least four different isoforms are known to exist.		

— VALIDATION IMAGES —

Tissue/cell: human colon carcinoma; 4% Paraformaldehyde-fixed and paraffin-embedded; Antigen retrieval: citrate buffer (0.01M, pH 6.0), Boiling bathing for 15min; Block endogenous peroxidase by 3% Hydrogen peroxide for 30min; Blocking buffer (normal goat serum, C-0005) at 37°C for 20 min; Incubation: Anti-IL-17RC/IL-17RL Polyclonal Antibody, Unconjugated(bs-2607R) 1:200, overnight at 4°C, followed by conjugation to the secondary antibody(SP-0023) and DAB(C-0010) staining