

bs-7803R**[Primary Antibody]****BioSS**
ANTIBODIES

www.bioss.com.cn

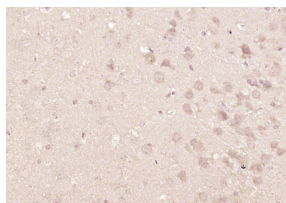
sales@bioss.com.cn

techsupport@bioss.com.cn

400-901-9800

HCF-1 Rabbit pAb**— DATASHEET —**

Host: Rabbit Clonality: Polyclonal GeneID: 3054 Target: HCF-1 Immunogen: KLH conjugated synthetic peptide derived from human HCF-1: 201-300/2035. Purification: affinity purified by Protein A Concentration: 1mg/ml Storage: 0.01M TBS (pH7.4) with 1% BSA, 0.02% Proclin300 and 50% Glycerol. Shipped at 4°C. Store at -20°C for one year. Avoid repeated freeze/thaw cycles. Background: This gene is a member of the host cell factor family and encodes a protein with five Kelch repeats, a fibronectin-like motif, and six HCF repeats, each of which contains a highly specific cleavage signal. This nuclear coactivator is proteolytically cleaved at one of the six possible sites, resulting in the creation of an N-terminal chain and the corresponding C-terminal chain. The final form of this protein consists of noncovalently bound N- and C-terminal chains. The protein is involved in control of the cell cycle and transcriptional regulation during herpes simplex virus infection. Alternatively spliced variants which encode different protein isoforms have been described; however, not all variants have been fully characterized. [provided by RefSeq, Jul 2008]	Isotype: IgG SWISS: P51610	Applications: IHC-P (1:100-500) IHC-F (1:100-500) IF (1:100-500) Reactivity: Mouse (predicted: Human, Rat, Pig, Cow, Dog, Horse) Predicted MW.: 156 kDa Subcellular Location: Cytoplasm ,Nucleus
---	---	---

— VALIDATION IMAGES —

Paraformaldehyde-fixed, paraffin embedded (mouse brain); Antigen retrieval by boiling in sodium citrate buffer (pH6.0) for 15min; Block endogenous peroxidase by 3% hydrogen peroxide for 20 minutes; Blocking buffer (normal goat serum) at 37°C for 30min; Antibody incubation with (HCF-1) Polyclonal Antibody, Unconjugated (bs-7803R) at 1:200 overnight at 4°C, followed by operating according to SP Kit(Rabbit) (sp-0023) instructions and DAB staining.