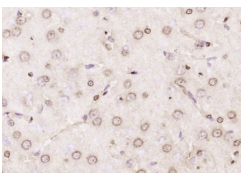


GRASP65 Rabbit pAb

- Catalog Number: bs-7802R
Target Protein: GRASP65
Concentration: 1mg/ml
Form: Liquid
Host: Rabbit
Clonality: Polyclonal
Isotype: IgG
Applications: IHC-P (1:100-500), IHC-F (1:100-500), IF (1:100-500)
Reactivity: Human, Rat (predicted: Mouse, Rabbit, Pig, Cow, Dog, Horse, Xenopus laevis)
Predicted MW: 46 kDa
Entrez Gene: 64689
Swiss Prot: Q9BQQ3
Source: KLH conjugated synthetic peptide derived from human GRASP65: 1-100/440.
Purification: affinity purified by Protein A
Storage: 0.01M TBS (pH7.4) with 1% BSA, 0.02% Proclin300 and 50% Glycerol.
Shipped at 4°C. Store at -20°C for one year. Avoid repeated freeze/thaw cycles.
Background: Stacking factor involved in the postmitotic assembly of Golgi stacks from mitotic Golgi fragments. Key structural protein required for the maintenance of the Golgi apparatus integrity: its caspase-mediated cleavage is required for fragmentation of the Golgi during apoptosis. Also mediates, via its interaction with GM130, the docking of transport vesicles with the Golgi membranes.

VALIDATION IMAGES



Paraformaldehyde-fixed, paraffin embedded (rat brain); Antigen retrieval by boiling in sodium citrate buffer (pH6.0) for 15min; Block endogenous peroxidase by 3% hydrogen peroxide for 20 minutes; Blocking buffer (normal goat serum) at 37°C for 30min; Antibody incubation with (GRASP65) Polyclonal Antibody, Unconjugated (bs-7802R) at 1:200 overnight at 4°C, followed by operating according to SP Kit(Rabbit) (sp-0023) instructions and DAB staining.