

bs-7808R**[Primary Antibody]****Bioss**
ANTIBODIES

www.bioss.com.cn

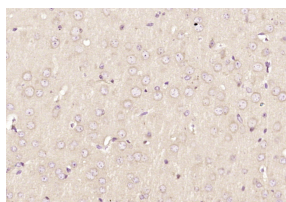
sales@bioss.com.cn

techsupport@bioss.com.cn

400-901-9800

KNTC1 Rabbit pAb**— DATASHEET —**

Host: Rabbit	Isotype: IgG	Applications: IHC-P (1:100-500) IHC-F (1:100-500) IF (1:100-500) Reactivity: Mouse (predicted: Human, Rat, Sheep, Cow, Dog, Horse) Predicted MW.: 251 kDa Subcellular Location: Cytoplasm ,Nucleus
Clonality: Polyclonal		
GeneID: 9735	SWISS: P50748	
Target: KNTC1		
Immunogen: KLH conjugated synthetic peptide derived from human KNTC1/Kinetochore: 1881-1980/2209.		
Purification: affinity purified by Protein A		
Concentration: 1mg/ml		
Storage: 0.01M TBS (pH7.4) with 1% BSA, 0.02% Proclin300 and 50% Glycerol. Shipped at 4°C. Store at -20°C for one year. Avoid repeated freeze/thaw cycles.		
Background: The kinetochore is the protein structure in eukaryotes which assembles on the centromere and links the chromosome to microtubule polymers from the mitotic spindle during mitosis and meiosis. The kinetochore contains two regions: an inner kinetochore, which is tightly associated with the centromere DNA; and an outer kinetochore, which interacts with microtubules. Even the simplest kinetochores consist of more than 45 different proteins, many of which are conserved throughout eukaryote species.		

— VALIDATION IMAGES —

Paraformaldehyde-fixed, paraffin embedded (mouse brain); Antigen retrieval by boiling in sodium citrate buffer (pH6.0) for 15min; Block endogenous peroxidase by 3% hydrogen peroxide for 20 minutes; Blocking buffer (normal goat serum) at 37°C for 30min; Antibody incubation with (KNTC1) Polyclonal Antibody, Unconjugated (bs-7808R) at 1:200 overnight at 4°C, followed by operating according to SP Kit(Rabbit) (sp-0023) instructions and DAB staining.