

**bs-6395R****[ Primary Antibody ]****LEU5 Rabbit pAb****BioSS**  
**ANTIBODIES**

www.bioss.com.cn

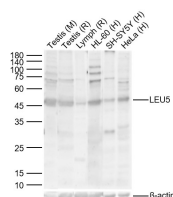
sales@bioss.com.cn

techsupport@bioss.com.cn

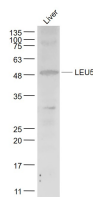
400-901-9800

**DATASHEET****Host:** Rabbit**Isotype:** IgG**Clonality:** Polyclonal**GeneID:** 10206**SWISS:** O60858**Target:** LEU5**Immunogen:** KLH conjugated synthetic peptide derived from human LEU5/RFP2: 151-250/407.**Purification:** affinity purified by Protein A**Concentration:** 1mg/ml**Storage:** 0.01M TBS (pH7.4) with 1% BSA, 0.02% Proclin300 and 50% Glycerol.

Shipped at 4°C. Store at -20°C for one year. Avoid repeated freeze/thaw cycles.

**Background:** This gene encodes a member of the tripartite motif (TRIM) family. The TRIM motif includes three zinc-binding domains, a RING, a B-box type 1 and a B-box type 2, and a coiled-coil region. This gene is located on chromosome 13 within the minimal deletion region for B-cell chronic lymphocytic leukemia. Multiple alternatively spliced transcript variants have been found for this gene.**Applications:** WB (1:500-2000)**Reactivity:** Human, Mouse, Rat  
(predicted: Rabbit, Pig, Sheep, Dog, Horse)**Predicted MW.:** 47 kDa**Subcellular Location:** Cell membrane ,Cytoplasm**VALIDATION IMAGES**

Sample: Lane 1: Mouse Testis Lysates Lane 2: Rat Testis Lysates Lane 3: Rat Lymph Lysates Lane 4: Human HL-60 cell Lysates Lane 5: Human SH-SY5Y cell Lysates Lane 6: Human HeLa cell Lysates Primary: Anti-LEU5 (bs-6395R) at 1/1000 dilution Secondary: IRDye800CW Goat Anti-Rabbit IgG at 1/20000 dilution Predicted band size: 47kDa Observed band size: 47kDa



Sample: Liver (Mouse) Lysate at 40 ug Primary: Anti-LEU5 (bs-6395R) at 1/1000 dilution Secondary: IRDye800CW Goat Anti-Rabbit IgG at 1/20000 dilution Predicted band size: 47 kD Observed band size: 48 kD