

bs-19960R

[Primary Antibody]

PREX2 Rabbit pAb

BioSS
ANTIBODIES

www.bioss.com.cn

sales@bioss.com.cn

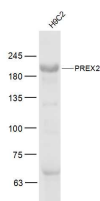
techsupport@bioss.com.cn

400-901-9800

— DATASHEET —

Host: Rabbit	Isotype: IgG	Applications: WB (1:500-2000)
Clonality: Polyclonal		Reactivity: Rat (predicted: Human, Mouse, Pig, Sheep, Cow, Dog, Horse)
GeneID: 80243	SWISS: Q70Z35	Predicted MW.: 183 kDa
Target: PREX2		Subcellular Location: Cell membrane ,Cytoplasm
Immunogen: KLH conjugated synthetic peptide derived from human PREX2: 231-330/1606.		
Purification: affinity purified by Protein A		
Concentration: 1mg/ml		
Storage: 0.01M TBS (pH7.4) with 1% BSA, 0.02% Proclin300 and 50% Glycerol. Shipped at 4°C. Store at -20°C for one year. Avoid repeated freeze/thaw cycles.		

— VALIDATION IMAGES —



Sample: H9C2(Rat) Cell Lysate at 30 ug Primary:
Anti-PREX2 (bs-19960R) at 1/300 dilution
Secondary: IRDye800CW Goat Anti-Rabbit IgG at
1/20000 dilution Predicted band size: 183 kD
Observed band size: 183 kD