

bs-12388R**[Primary Antibody]****KIF7 Rabbit pAb****BioSS**
ANTIBODIES

www.bioss.com.cn

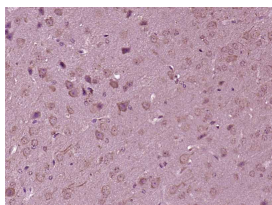
sales@bioss.com.cn

techsupport@bioss.com.cn

400-901-9800

— DATASHEET —

Host: Rabbit	Isotype: IgG	Applications: IHC-P (1:100-500) IHC-F (1:100-500) IF (1:100-500)
Clonality: Polyclonal		
GeneID: 374654	SWISS: Q2M1P5	
Target: KIF7		
Immunogen: KLH conjugated synthetic peptide derived from human KIF7: 751-850/1343.		
Purification: affinity purified by Protein A		Reactivity: Mouse (predicted: Human, Rat, Dog)
Concentration: 1mg/ml		Predicted MW.: 150 kDa
Storage: 0.01M TBS (pH7.4) with 1% BSA, 0.02% Proclin300 and 50% Glycerol. Shipped at 4°C. Store at -20°C for one year. Avoid repeated freeze/thaw cycles.		
Background: KIF7 is a 1,343 amino acid protein expressed in embryonic stem cells, melanotic melanoma and Jurkat T-cells. KIF7 is a member of the KIF27 subfamily of the kinesin-like protein family and contains one kinesin-motor domain. It is suggested that KIF7 may participate in the Hedgehog (Hh) signaling pathway by regulating the proteolysis and stability of Gli transcription factors. Hedgehog (Hh) signaling plays a critical role in embryonic development.		Subcellular Location: Cytoplasm

— VALIDATION IMAGES —

Paraformaldehyde-fixed, paraffin embedded (Mouse brain); Antigen retrieval by boiling in sodium citrate buffer (pH6.0) for 15min; Block endogenous peroxidase by 3% hydrogen peroxide for 20 minutes; Blocking buffer (normal goat serum) at 37°C for 30min; Antibody incubation with (KIF7) Polyclonal Antibody, Unconjugated (bs-12388R) at 1:400 overnight at 4°C, followed by operating according to SP Kit(Rabbit) (sp-0023) instructions and DAB staining.