

bs-19952R**[Primary Antibody]****BioSS**
ANTIBODIES

www.bioss.com.cn

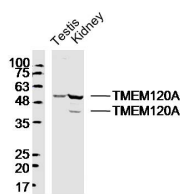
sales@bioss.com.cn

techsupport@bioss.com.cn

400-901-9800

TMEM120A Rabbit pAb**— DATASHEET —**

Host: Rabbit	Isotype: IgG	Applications: WB (1:500-2000)
Clonality: Polyclonal		Reactivity: Mouse (predicted: Human)
GeneID: 83862	SWISS: Q9BXJ8	
Target: TMEM120A		
Immunogen: KLH conjugated synthetic peptide derived from human TMEM120A: 251-343/343. < Extracellular >		Predicted MW.: 41 kDa
Purification: affinity purified by Protein A		Subcellular Location: Cell membrane
Concentration: 1mg/ml		
Storage: 0.01M TBS (pH7.4) with 1% BSA, 0.02% Proclin300 and 50% Glycerol. Shipped at 4°C. Store at -20°C for one year. Avoid repeated freeze/thaw cycles.		

— VALIDATION IMAGES —

Sample: Testis (Mouse)Lysate at 40 ug Kidney
(Mouse)Lysate at 40 ug Primary: Anti-
TMEM120A(bs-19952R)at 1/300 dilution
Secondary: IRDye800CW Goat Anti-RabbitIgG at
1/20000 dilution Predicted band size: 41kD
Observed band size: 41/51kD

— SELECTED CITATIONS —

- **[IF=21.1]** Xie Man-Xiu. et al. Endophilin A2 controls touch and mechanical allodynia via kinesin-mediated Piezo2 trafficking. MILITARY MED RES. 2024 Dec;11(1):1-27 WB,CoIP ;Mouse. 38475827
- **[IF=3.708]** Xiao-Long Zhang. et al. Hen Egg Lysozyme Alleviates Static Mechanical Pain Via NRF1-Parkin-TACAN Signaling Axis in Sensory Neurons. NEUROSCIENCE. 2022 Aug;; WB,IHC ;Mouse. 35985504