

## TMCC1 Rabbit pAb

Catalog Number: bs-19948R

Target Protein: TMCC1

Concentration: 1mg/ml

Form: Liquid

Host: Rabbit

Clonality: Polyclonal

Isotype: IgG

Applications: WB (1:500-2000)

Reactivity: Mouse (predicted:Human, Rat, Rabbit, Cow, Dog, Horse)

Predicted MW: 72 kDa

Entrez Gene: 23023

Swiss Prot: O94876

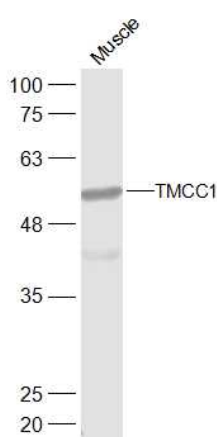
Source: KLH conjugated synthetic peptide derived from human TMCC1: 101-200/653.

Purification: affinity purified by Protein A

Storage: 0.01M TBS (pH7.4) with 1% BSA, 0.02% Proclin300 and 50% Glycerol.

Shipped at 4°C. Store at -20°C for one year. Avoid repeated freeze/thaw cycles.

### VALIDATION IMAGES



Sample: Muscle (Mouse) Lysate at 40 ug Primary: Anti-TMCC1 (bs-19948R) at 1/300 dilution Secondary: IRDye800CW Goat Anti-Rabbit IgG at 1/20000 dilution Predicted band size: 72 kD Observed band size: 53 kD