

TIP120A Rabbit pAb

Catalog Number: bs-19935R

Target Protein: TIP120A

Concentration: 1mg/ml

Form: Liquid

Host: Rabbit

Clonality: Polyclonal

Isotype: IgG

Applications: WB (1:500-2000)

Reactivity: Human (predicted:Mouse, Rat, Pig, Sheep, Cow, Zebrafish, Chicken, Dog, Horse)

Predicted MW: 136 kDa

Subcellular Cytoplasm ,Nucleus

Locations:

Entrez Gene: 55832

Swiss Prot: Q86VP6

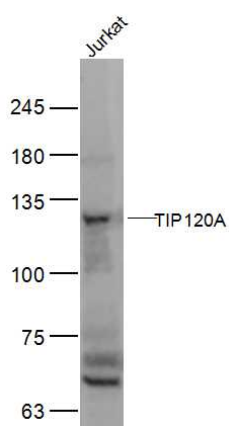
Source: KLH conjugated synthetic peptide derived from human TIP120A: 771-870/1230.

Purification: affinity purified by Protein A

Storage: 0.01M TBS (pH7.4) with 1% BSA, 0.02% Proclin300 and 50% Glycerol.

Shipped at 4°C. Store at -20°C for one year. Avoid repeated freeze/thaw cycles.

VALIDATION IMAGES



Sample: Jurkat(Human) Cell Lysate at 30 ug Primary: Anti-TIP120A (bs-19935R) at 1/300 dilution Secondary: IRDye800CW Goat Anti-Rabbit IgG at 1/20000 dilution Predicted band size: 136 kD Observed band size: 117 kD