

MT Rabbit pAb

Catalog Number: bs-10568R

Target Protein: MT

Concentration: 1mg/ml

Form: Liquid

Host: Rabbit

Clonality: Polyclonal

Isotype: IgG

Applications: WB (1:500-2000)

Reactivity: Mouse, Rat (predicted:Pig, Cow, Horse)

Predicted MW: 43 kDa

Subcellular Cell membrane

Locations:

Entrez Gene: 27349

Swiss Prot: Q8IVS2

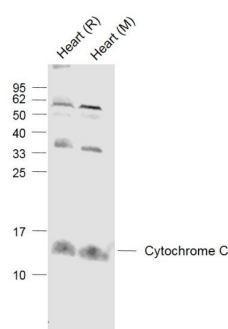
Purification: affinity purified by Protein A

Storage: 0.01M TBS (pH7.4) with 1% BSA, 0.02% Proclin300 and 50% Glycerol.

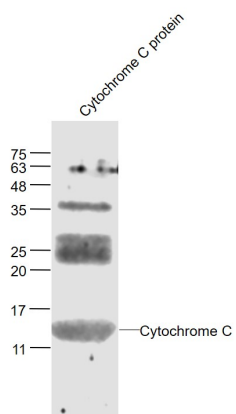
Shipped at 4°C. Store at -20°C for one year. Avoid repeated freeze/thaw cycles.

Background: The protein encoded by this gene is found exclusively in the mitochondrion, where it catalyzes the transfer of a malonyl group from malonyl-CoA to the mitochondrial acyl carrier protein. The encoded protein may be part of a fatty acid synthase complex that is more like the type II prokaryotic and plastid complexes rather than the type I human cytosolic complex. Alternative splicing results in multiple transcript variants encoding different isoforms. [provided by RefSeq, Mar 2012]

VALIDATION IMAGES



Sample: Lane 1: Heart (Rat) Lysate at 40 ug Lane 2: Heart (Mouse) Lysate at 40 ug Primary: Anti-Cytochrome C (bs-10568R) at 1/1000 dilution Secondary: IRDye800CW Goat Anti-Rabbit IgG at 1/20000 dilution Predicted band size: 14.4 kD Observed band size: 14.4 kD



Sample: Cytochrome C protein at 30 ug Primary: Anti- Cytochrome C (bs-10568R) at 1/300 dilution
Secondary: IRDye800CW Goat Anti-Rabbit IgG at 1/20000 dilution Predicted band size: 14 kD Observed band
size: 14 kD