

**bs-10423R****[ Primary Antibody ]**

## Collagen I Rabbit pAb

**Bioss**  
**ANTIBODIES**

www.bioss.com.cn

sales@bioss.com.cn

techsupport@bioss.com.cn

400-901-9800

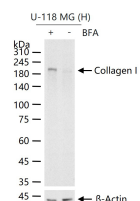
### DATASHEET

**Host:** Rabbit**Isotype:** IgG**Clonality:** Polyclonal**GeneID:** 1277**SWISS:** P02452**Target:** Collagen I**Immunogen:** KLH conjugated synthetic peptide derived from human Collagen I: 1051-1150/1464.**Purification:** affinity purified by Protein A**Concentration:** 1mg/ml**Storage:** 0.01M TBS (pH7.4) with 1% BSA, 0.02% Proclin300 and 50% Glycerol.

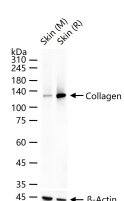
Shipped at 4°C. Store at -20°C for one year. Avoid repeated freeze/thaw cycles.

**Background:** Collagens are highly conserved throughout evolution and are characterised by an uninterrupted "Glycine XY" triplet repeat that is a necessary part of the triple helical structure. Type I collagen (95 kDa) is found in bone, cornea, skin and tendon. Mutations in the encoding gene are associated with osteogenesis imperfecta, Ehlers Danlos syndrome, and idiopathic osteoporosis. Reciprocal translocations between chromosomes 17 and 22, where this gene and the gene for Platelet-derived growth factor beta are located, are associated with a particular type of skin tumor called dermatofibrosarcoma protuberans, resulting from unregulated expression of the growth factor.**Applications:** WB (1:200-1000)**IHC-P** (1:200-1000)**IHC-F** (1:200-1000)**IF** (1:200-1000)**Flow-Cyt** (1:50-100)**ICC/IF** (1:50-200)**Reactivity:** Human, Mouse, Rat**Predicted MW.:** 130 kDa**Subcellular Location:** Secreted ,Extracellular matrix

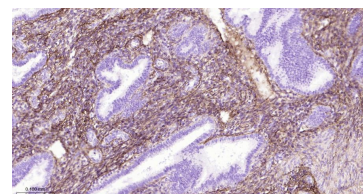
### VALIDATION IMAGES



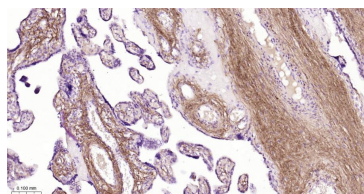
U-118 MG (H) cells were treated with or without BFA, 25 µg total protein per lane of cell lysates (see on figure) probed with Collagen I polyclonal antibody, unconjugated (bs-10423R) at 1:1000 dilution and 4°C overnight incubation. Followed by conjugated secondary antibody incubation at r.t. for 60 min.



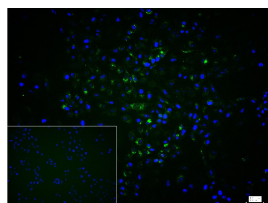
25 ug total protein per lane of various lysates (see on figure) probed with Collagen I polyclonal antibody, unconjugated (bs-10423R) at 1:1000 dilution and 4°C overnight incubation. Followed by conjugated secondary antibody incubation at r.t. for 60 min.



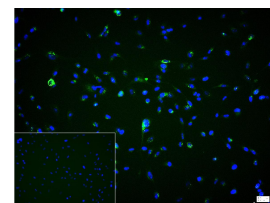
Paraformaldehyde-fixed, paraffin embedded Human Uterus; Antigen retrieval by boiling in sodium citrate buffer (pH6.0) for 15 min; The section was incubated with Collagen I Polyclonal Antibody, Unconjugated (bs-10423R) at 1:800 overnight at 4°C, followed by conjugation to the bs-0295G-HRP and DAB (C-0010) staining.



Paraformaldehyde-fixed, paraffin embedded Human Placenta; Antigen retrieval by boiling in sodium citrate buffer (pH6.0) for 15 min; The section was incubated with Collagen I Polyclonal Antibody, Unconjugated (bs-10423R) at 1:800 overnight at 4°C, followed by conjugation to the bs-0295G-HRP and DAB (C-0010) staining.



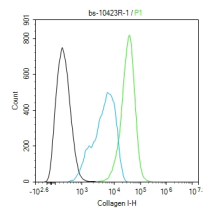
4% Paraformaldehyde-fixed U2-OS (H) cell; Triton X-100 at r.t. for 20 min; Antibody incubation with (Collagen I) polyclonal Antibody, unconjugated (bs-10423R) 1:100, 90 min at 37°C; followed by conjugated Goat Anti-Rabbit IgG antibody (green, bs-60295G-BF488) at 37°C for 90 min, DAPI (blue, C02-04002) was used to stain



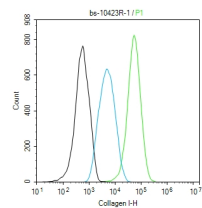
4% Paraformaldehyde-fixed U-87MG (H) cell; Triton X-100 at r.t. for 20 min; Antibody incubation with (Collagen I) polyclonal Antibody, unconjugated (bs-10423R) 1:100, 90 min at 37°C; followed by conjugated Goat Anti-Rabbit IgG antibody (green, bs-60295G-BF488) at 37°C for 90 min, DAPI (blue, C02-04002) was used to stain

Important Note: This product as supplied is intended for research use only, not for use in human, therapeutic or diagnostic applications.

the cell nuclei. PBS instead of the primary antibody was used as the blank control.



The U2-OS (H) cells were fixed with 4% PFA (10 min at r.t.) and then permeabilized with 90% ice-cold methanol for 20 min at -20°C, the cells then were incubated in 5%BSA to block non-specific protein-protein interactions (30 min at r.t.). Primary Antibody (green): Rabbit Anti-Collagen I antibody (bs-10423R, 1:100); Secondary Antibody (white blue): Goat anti-Rabbit IgG-BF488 (bs-60295G-BF488): 1 µg/test. Blank control (black): PBS. Acquisition of 20,000 events was performed.



The U-87MG (H) cells were fixed with 4% PFA (10 min at r.t.) and then permeabilized with 90% ice-cold methanol for 20 min at -20°C, the cells then were incubated in 5%BSA to block non-specific protein-protein interactions (30 min at r.t.). Primary Antibody (green): Rabbit Anti-Collagen I antibody (bs-10423R, 1:100); Secondary Antibody (white blue): Goat anti-Rabbit IgG-BF488 (bs-60295G-BF488): 1 µg/test. Blank control (black): PBS. Acquisition of 20,000 events was performed.

the cell nuclei. PBS instead of the primary antibody was used as the blank control.

## — SELECTED CITATIONS —

- **[IF=27.4]** Haobo Wang. et al. Pulling the Rug Out from Under: Biomechanical Microenvironment Remodeling for Induction of Hepatic Stellate Cell Quiescence. ADV MATER. 2024 Oct;;2406590 IHC, WB ;Mouse. 39410721
- **[IF=26.6]** Lei Yao. et al. NAD<sup>+</sup> biosynthesis and mitochondrial repair in acute kidney injury via ultrasound-responsive thylakoid-integrating liposomes. NAT BIOMED ENG. 2025 Jun;;1-18 IF, WB ;Mouse. 40461655
- **[IF=24.2]** Fangnan Lv. et al. Self-reinforcing nano-spearhead drives the efficacy of CAR-T cells against progressive triple negative breast cancer. MATER TODAY. 2024 May;; IF, IHC ;Mouse. 10.1016/j.mattod.2024.05.004
- **[IF=24.2]** Fangnan Lv. et al. Self-reinforcing nano-spearhead drives the efficacy of CAR-T cells against progressive triple negative breast cancer. MATER TODAY. 2024 May;; IF ;Mouse. 10.1016/j.mattod.2024.05.004
- **[IF=18.808]** Jincheng Tang. et al. Flexible Osteogenic Glue as an All-In-One Solution to Assist Fracture Fixation and Healing. 2021 Jul 02 IHC ;Rabbit. 10.1002/adfm.202102465