

phospho-BACE1 (Ser498) Rabbit pAb

Catalog Number: bs-10192R

Target Protein: phospho-BACE1 (Ser498)

Concentration: 1mg/ml

Form: Liquid

Host: Rabbit

Clonality: Polyclonal

Isotype: IgG

Applications: IHC-P (1:100-500), IHC-F (1:100-500), IF (1:100-500)

Reactivity: Human, Mouse, Rat (predicted:Rabbit, Pig, Cow, Chicken, Dog, Horse)

Predicted MW: 51 kDa

Entrez Gene: 23621

Swiss Prot: P56817

Source: KLH conjugated Synthesised phosphopeptide derived from human BACE1 around the phosphorylation site of Ser498: DI(p-S)LL.

Purification: affinity purified by Protein A

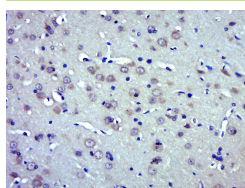
Storage: 0.01M TBS (pH7.4) with 1% BSA, 0.02% Proclin300 and 50% Glycerol.

Shipped at 4°C. Store at -20°C for one year. Avoid repeated freeze/thaw cycles.

Background: bs-0164P is one synthetic peptide derived from human BACE1.

Cerebral deposition of amyloid beta peptide is an early and critical feature of Alzheimer's disease. Amyloid beta peptide is generated by proteolytic cleavage of amyloid precursor protein(APP) by two proteases, one of which is the protein encoded by this gene. The encoded protein, a member of the peptidase A1 protein family, is a type I integral membrane glycoprotein and aspartic protease that is found mainly in the Golgi. Multiple transcript variants encoding different isoforms have been described for this gene.

VALIDATION IMAGES



Paraformaldehyde-fixed, paraffin embedded (Mouse brain); Antigen retrieval by boiling in sodium citrate buffer (pH6.0) for 15min; Block endogenous peroxidase by 3% hydrogen peroxide for 20 minutes; Blocking buffer (normal goat serum) at 37°C for 30min; Antibody incubation with (phospho-BACE1 (Ser498)) Polyclonal Antibody, Unconjugated (bs-10192R) at 1:500 overnight at 4°C, followed by a conjugated secondary (sp-0023) for 20 minutes and DAB staining.