

**bs-8282R****[ Primary Antibody ]****BioSS**  
ANTIBODIES

www.bioss.com.cn

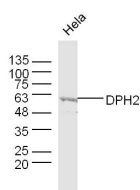
sales@bioss.com.cn

techsupport@bioss.com.cn

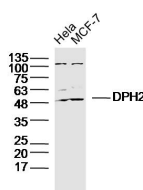
400-901-9800

**DPH2 Rabbit pAb****— DATASHEET —**

<b>Host:</b> Rabbit <b>Clonality:</b> Polyclonal <b>GeneID:</b> 1802 <b>Target:</b> DPH2 <b>Immunogen:</b> KLH conjugated synthetic peptide derived from human DPH2: 401-489/489. <b>Purification:</b> affinity purified by Protein A <b>Concentration:</b> 1mg/ml <b>Storage:</b> 0.01M TBS (pH7.4) with 1% BSA, 0.02% Proclin300 and 50% Glycerol. Shipped at 4°C. Store at -20°C for one year. Avoid repeated freeze/thaw cycles. <b>Background:</b> DPH2 (diphthamide biosynthesis protein 2), also known as DPH2L2, is a 489 amino acid protein that shows strong expression in skeletal muscle; moderate expression in heart, small intestine, liver, pancreas, testis and colon; and lesser expression in brain, placenta, kidney, spleen, thymus, prostate, ovary and lymphocytes. DPH2 interacts with DPH1 and, functioning together as a dimer or multimer, DPH1 and DPH2 may participate in diphthamide biosynthesis. Diphthamide is a posttranslationally modified histidine residue which occurs in EF-2 (elongation factor 2) and targets diphtheria toxin ADP-ribosylation. The loss of DPH2 in <i>Saccharomyces cerevisiae</i> is believed to suppress zymocidity. Two transcript variants encoding different isoforms have been found for this gene. Required for the first step in the synthesis of diphthamide, a post-translational modification of histidine which occurs in translation elongation factor 2. Tissue specificity: Strongly expressed in skeletal muscle. Moderately expressed in heart, small intestine, liver, pancreas, testis and colon. Weakly expressed in brain, placenta, kidney, spleen, thymus, prostate, ovary and lymphocytes.	<b>Isotype:</b> IgG  <b>SWISS:</b> Q9BQC3  <b>Applications:</b> WB (1:500-2000)  <b>Reactivity:</b> Human (predicted: Mouse, Rat, Rabbit, Sheep, Cow, Chicken, Dog, Horse)  <b>Predicted MW.:</b> 52 kDa  <b>Subcellular Location:</b> Cytoplasm
--	--

**— VALIDATION IMAGES —**

Sample: HeLa Cell (Human) Lysate at 40 ug  
Primary: Anti-DPH2 (bs-8282R) at 1/300 dilution  
Secondary: IRDye800CW Goat Anti-Rabbit IgG at 1/20000 dilution Predicted band size: 52 kD  
Observed band size: 60 kD



Sample: HeLa Cell (Human) Lysate at 30 ug  
MCF-7 Cell (Human) Lysate at 30 ug Primary:  
Anti-DPH2 (bs-8282R) at 1/300 dilution  
Secondary: IRDye800CW Goat Anti-Rabbit IgG at 1/20000 dilution Predicted band size: 52kD  
Observed band size: 52kD