

bs-8261R**[Primary Antibody]****DHRS13 Rabbit pAb****BioSS**
ANTIBODIES

www.bioss.com.cn

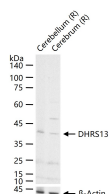
sales@bioss.com.cn

techsupport@bioss.com.cn

400-901-9800

— DATASHEET —

Host: Rabbit	Isotype: IgG	Applications: WB (1:500-2000)
Clonality: Polyclonal		
GeneID: 147015	SWISS: Q6UX07	
Target: DHRS13		
Immunogen: KLH conjugated synthetic peptide derived from human DHRS13: 101-200/377.		
Purification: affinity purified by Protein A		Reactivity: Rat (predicted: Human, Mouse, Sheep, Cow, Horse)
Concentration: 1mg/ml		Predicted MW.: 38 kDa
Storage: 0.01M TBS (pH7.4) with 1% BSA, 0.02% Proclin300 and 50% Glycerol. Shipped at 4°C. Store at -20°C for one year. Avoid repeated freeze/thaw cycles.		Subcellular Location: Secreted
Background: DHRS13 (dehydrogenase/reductase SDR family member 13), also known as UNQ419/PRO853, is a 377 amino acid secreted protein belonging to the short-chain dehydrogenases/reductases (SDR) family. DHRS13 is presumed to function as an oxidoreductase and is phosphorylated, potentially by ATM or ATR, upon DNA damage. DHRS13 exists as two isoforms produced by alternative splicing events. The gene encoding DHRS13 maps to human chromosome 17, which comprises over 2.5% of the human genome and encodes over 1,200 genes. Neurofibromatosis, dysregulated Schwann cell growth, Alexander disease, Birt-Hogg-Dube syndrome and Canavan disease are associated with chromosome 17.		

— VALIDATION IMAGES —

25 ug total protein per lane of various lysates (see on figure) probed with DHRS13 polyclonal antibody, unconjugated (bs-8261R) at 1:1000 dilution and 4°C overnight incubation. Followed by conjugated secondary antibody incubation at r.t. for 60 min.