

**bsm-52075R****[ Primary Antibody ]****BioSS**  
ANTIBODIES

www.bioss.com.cn

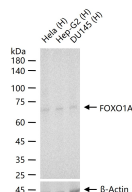
sales@bioss.com.cn

techsupport@bioss.com.cn

400-901-9800

**FOXO1A Recombinant Rabbit mAb****— DATASHEET —**

<b>Host:</b> Rabbit	<b>Isotype:</b> IgG	<b>Applications:</b> WB (1:500-2000)
<b>Clonality:</b> Recombinant	<b>CloneNo.:</b> 3G1	
<b>GeneID:</b> 2308	<b>SWISS:</b> Q12778	
<b>Target:</b> FOXO1A		
<b>Immunogen:</b> A synthesized peptide derived from human FOXO1: 450-655.		
<b>Purification:</b> affinity purified by Protein A		<b>Reactivity:</b> Human
<b>Concentration:</b> 1mg/ml		
<b>Storage:</b> 0.01M TBS (pH7.4) with 1% BSA, 0.02% Proclin300 and 50% Glycerol. Shipped at 4°C. Store at -20°C for one year. Avoid repeated freeze/thaw cycles.		
<b>Background:</b> This gene belongs to the forkhead family of transcription factors which are characterized by a distinct forkhead domain. The specific function of this gene has not yet been determined; however, it may play a role in myogenic growth and differentiation. Translocation of this gene with PAX3 has been associated with alveolar rhabdomyosarcoma. [provided by RefSeq].		
		<b>Predicted MW.:</b> 72 kDa
		<b>Subcellular Location:</b> Cytoplasm ,Nucleus

**— VALIDATION IMAGES —**

25 ug total protein per lane of various lysates (see on figure) probed with FOXO1A monoclonal antibody, unconjugated (bsm-52075R) at 1:1000 dilution and 4°C overnight incubation. Followed by conjugated secondary antibody incubation at r.t. for 60 min.