

bs-18201R**[Primary Antibody]****LCTL Rabbit pAb****Bioss**
ANTIBODIES

www.bioss.com.cn

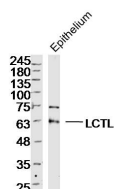
sales@bioss.com.cn

techsupport@bioss.com.cn

400-901-9800

— DATASHEET —

Host: Rabbit	Isotype: IgG	Applications: WB (1:500-2000)
Clonality: Polyclonal		Reactivity: Mouse (predicted: Human, Rat, Zebrafish)
GeneID: 197021	SWISS: Q6UWM7	
Target: LCTL		Predicted MW.: 63 kDa
Immunogen: KLH conjugated synthetic peptide derived from human LCTL: 431-530/567. < Extracellular >		Subcellular Location: Cytoplasm
Purification: affinity purified by Protein A		
Concentration: 1mg/ml		
Storage: 0.01M TBS (pH7.4) with 1% BSA, 0.02% Proclin300 and 50% Glycerol. Shipped at 4°C. Store at -20°C for one year. Avoid repeated freeze/thaw cycles.		
Background: This gene encodes a member of family 1 glycosidases. Glycosidases are enzymes that hydrolyze glycosidic bonds and are classified into families based on primary amino acid sequence. Most members of family 1 have two conserved glutamic acid residues, which are required for enzymatic activity. The mouse ortholog of this protein has been characterized and has a domain structure of an N-terminal signal peptide, glycosidase domain, transmembrane domain, and a short cytoplasmic tail. It lacks one of the conserved glutamic acid residues important for catalysis, and its function remains to be determined (PMID: 12084582). Alternative splicing results in multiple transcript variants. [provided by RefSeq, Jun 2013]		

— VALIDATION IMAGES —

Sample: Epithelium (Mouse) Lysate at 40 ug
Primary: Anti-LCTL (bs-18201R) at 1/300 dilution
Secondary: IRDye800CW Goat Anti-Rabbit IgG at 1/20000 dilution Predicted band size: 63 kD
Observed band size: 63 kD