

bs-18200R**[Primary Antibody]****LCT Rabbit pAb****Bioss**
ANTIBODIES

www.bioss.com.cn

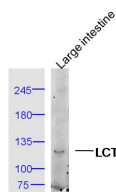
sales@bioss.com.cn

techsupport@bioss.com.cn

400-901-9800

— DATASHEET —

Host: Rabbit	Isotype: IgG	Applications: WB (1:500-2000)
Clonality: Polyclonal		Reactivity: Mouse (predicted: Human, Rat, Rabbit, Pig, Sheep, Cow, Dog, Horse)
GeneID: 3938	SWISS: P09848	Predicted MW.: 121 kDa
Target: LCT		Subcellular Location: Cell membrane
Immunogen: KLH conjugated synthetic peptide derived from human LCT: 1121-1220/1927. < Extracellular >		
Purification: affinity purified by Protein A		
Concentration: 1mg/ml		
Storage: 0.01M TBS (pH7.4) with 1% BSA, 0.02% Proclin300 and 50% Glycerol. Shipped at 4°C. Store at -20°C for one year. Avoid repeated freeze/thaw cycles.		
Background: The protein encoded by this gene belongs to the family 1 of glycosyl hydrolases. The protein is integral to plasma membrane and has both phlorizin hydrolase activity and lactase activity. [provided by RefSeq, Jul 2008]		

— VALIDATION IMAGES —

Sample: Large intestine (Mouse) Lysate at 40 ug
Primary: Anti-LCT (bs-18200R) at 1/300 dilution
Secondary: IRDye800CW Goat Anti-Rabbit IgG at 1/20000 dilution
Predicted band size: 121 kD
Observed band size: 121 kD

— SELECTED CITATIONS —

- **[IF=2.6]** Xiaomin Xu. et al. Investigation on the mechanism of hepatotoxicity of dictamnine on juvenile zebrafish by integrating metabolomics and transcriptomics. GENE. 2024 Dec;930:148826 WB ;Zebrafish. 39154970