

TRAF2 Rabbit pAb

Catalog Number: bs-22372R

Target Protein: TRAF2

Concentration: 1mg/ml

Form: Liquid

Host: Rabbit

Clonality: Polyclonal

Isotype: IgG

Applications: WB (1:500-2000)

Reactivity: Human, Mouse, Rat

Predicted MW: 56 kDa

Entrez Gene: 7186

Swiss Prot: Q12933

Source: KLH conjugated synthetic peptide derived from human TRAF2 : 261-360/501.

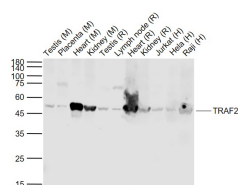
Purification: affinity purified by Protein A

Storage: 0.01M TBS (pH7.4) with 1% BSA, 0.02% Proclin300 and 50% Glycerol.

Shipped at 4°C. Store at -20°C for one year. Avoid repeated freeze/thaw cycles.

Background: The induction of the various cellular responses mediated by tumor necrosis factor is initiated by its interaction with the TNFR1 and TNFR2 cell surface receptors. TRAF2 interacts with the cytoplasmic domain of TNFR2. TRAF2 is a common signal transducer for TNFR2 and CD40 that mediates activation of NF kappa B.

VALIDATION IMAGES



Sample: Lane 1: Testis (Mouse) Lysate at 40 ug Lane 2: Placenta (Mouse) Lysate at 40 ug Lane 3: Heart (Mouse) Lysate at 40 ug Lane 4: Kidney (Mouse) Lysate at 40 ug Lane 5: Testis (Rat) Lysate at 40 ug Lane 6: Lymph node (Rat) Lysate at 40 ug Lane 7: Heart (Rat) Lysate at 40 ug Lane 8: Kidney (Rat) Lysate at 40 ug Lane 9: Jurkat (Human) Cell Lysate at 30 ug Lane 10: HeLa (Human) Cell Lysate at 30 ug Lane 11: Raji (Human) Cell Lysate at 30 ug Primary: Anti-TRAF2 (bs-22372R) at 1/1000 dilution Secondary: IRDye800CW Goat Anti-Rabbit IgG at 1/20000 dilution Predicted band size: 50 kD Observed band size: 50 kD

PRODUCT SPECIFIC PUBLICATIONS

[IF=1.2] Juanjuan Shen. et al. The Antihypertensive Effects and Mechanisms of Huotan Jiedu Tongluo Decoction in Rats with H-Type Hypertension. JOVE-J VIS EXP. 2024 May;(207):e65932 Other ; . 38829134