

bs-6299R**[Primary Antibody]****DRES17 Rabbit pAb****BioSS**
ANTIBODIES

www.bioss.com.cn

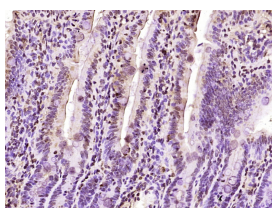
sales@bioss.com.cn

techsupport@bioss.com.cn

400-901-9800

— DATASHEET —

Host: Rabbit Clonality: Polyclonal GeneID: 58497 Target: DRES17 Immunogen: KLH conjugated synthetic peptide derived from human DRES17: 201-300/453. Purification: affinity purified by Protein A Concentration: 1mg/ml Storage: 0.01M TBS (pH7.4) with 1% BSA, 0.02% Proclin300 and 50% Glycerol. Shipped at 4°C. Store at -20°C for one year. Avoid repeated freeze/thaw cycles. Background: PRUNE, the human homologue of the Drosophila gene, is located in 1q21.3, a region highly amplified in human sarcomas, malignant tumours of mesenchymal origin. Human prune (h-prune), a phosphoesterase DHH family appertaining protein, physically interacts with nm23-H1, a metastasis suppressor gene. h-prune is involved in cellular motility and metastasis formation. Metastatic breast cancers were found to overexpress h-prune; h-prune was also found to be highly expressed in colorectal and pancreatic cancers. Hence h-prune is considered useful as a marker for tumor aggressiveness.	Isotype: IgG SWISS: Q86TP1	Applications: IHC-P (1:100-500) IHC-F (1:100-500) IF (1:100-500) Reactivity: Mouse (predicted: Human, Rat, Rabbit, Pig, Sheep, Cow, Dog, Horse) Predicted MW.: 50 kDa Subcellular Location: Cell membrane ,Cytoplasm ,Nucleus
--	---	---

— VALIDATION IMAGES —

Paraformaldehyde-fixed, paraffin embedded (mouse intestine tissue); Antigen retrieval by boiling in sodium citrate buffer (pH6.0) for 15min; Block endogenous peroxidase by 3% hydrogen peroxide for 20 minutes; Blocking buffer (normal goat serum) at 37°C for 30min; Antibody incubation with (DRES17) Polyclonal Antibody, Unconjugated (bs-6299R) at 1:400 overnight at 4°C, followed by operating according to SP Kit(Rabbit) (sp-0023) instructions and DAB staining.