

bsm-52047R**[Primary Antibody]**

www.bioss.com.cn

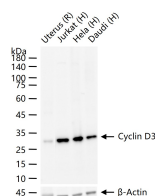
sales@bioss.com.cn

techsupport@bioss.com.cn

400-901-9800

Cyclin D3 Recombinant Rabbit mAb**— DATASHEET —**

Host: Rabbit Clonality: Recombinant GeneID: 896 Target: Cyclin D3	Isotype: IgG CloneNo.: 4A8 SWISS: P30281	Applications: WB (1:500-2000) Reactivity: Human, Rat
Purification: affinity purified by Protein A Concentration: 1mg/ml Storage: 0.01M TBS (pH7.4) with 1% BSA, 0.02% Proclin300 and 50% Glycerol. Shipped at 4°C. Store at -20°C for one year. Avoid repeated freeze/thaw cycles.		Predicted MW.: 32 kDa Subcellular Location: Cell membrane ,Cytoplasm ,Nucleus
Background: The protein encoded by this gene belongs to the highly conserved cyclin family, whose members are characterized by a dramatic periodicity in protein abundance through the cell cycle. Cyclins function as regulators of CDK kinases. Different cyclins exhibit distinct expression and degradation patterns which contribute to the temporal coordination of each mitotic event. This cyclin forms a complex with and functions as a regulatory subunit of CDK4 or CDK6, whose activity is required for cell cycle G1/S transition. This protein has been shown to interact with and be involved in the phosphorylation of tumor suppressor protein Rb. The CDK4 activity associated with this cyclin was reported to be necessary for cell cycle progression through G2 phase into mitosis after UV radiation. Several transcript variants encoding different isoforms have been found for this gene. [provided by RefSeq, Oct 2008].		

— VALIDATION IMAGES —

25 ug total protein per lane of various lysates
 (see on figure) probed with Cyclin D3
 monoclonal antibody, unconjugated
 (bsm-52047R) at 1:1000 dilution and 4°C
 overnight incubation. Followed by conjugated
 secondary antibody incubation at r.t. for 60 min.