

bs-11122R**[Primary Antibody]****PCDHA8 Rabbit pAb****BioSS**
ANTIBODIES

www.bioss.com.cn

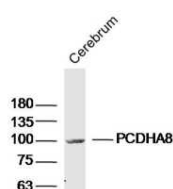
sales@bioss.com.cn

techsupport@bioss.com.cn

400-901-9800

— DATASHEET —

Host: Rabbit	Isotype: IgG	Applications: WB (1:500-2000)
Clonality: Polyclonal		Reactivity: Mouse, Rat (predicted: Human, Pig, Sheep, Cow, Dog, Horse)
GeneID: 56140	SWISS: Q9Y5H6	
Target: PCDHA8		Predicted MW.: 100 kDa
Immunogen: KLH conjugated synthetic peptide derived from human PCDHA8: 451-550/950. < Extracellular >		Subcellular Location: Cell membrane
Purification: affinity purified by Protein A		
Concentration: 1mg/ml		
Storage: 0.01M TBS (pH7.4) with 1% BSA, 0.02% Proclin300 and 50% Glycerol. Shipped at 4°C. Store at -20°C for one year. Avoid repeated freeze/thaw cycles.		
Background: Protocadherins are a large family of cadherin-like cell adhesion proteins that are involved in the establishment and maintenance of neuronal connections in the brain. There are three protocadherin gene clusters, designated alpha, beta and gamma, all of which contain multiple tandemly arranged genes. PCDHA8 (protocadherin alpha 8) is a 950 amino acid single-pass type I membrane protein that contains six cadherin domains and is encoded by a gene which is located within the protocadherin alpha gene cluster on human chromosome 5. Existing as multiple alternatively spliced isoforms, PCDHA8 functions as a potential calcium-dependent cell adhesion protein that may be involved in the establishment and maintenance of neuronal connections within the brain.		

— VALIDATION IMAGES —

Sample: Cerebrum (Mouse) Lysate at 40 ug
Primary: Anti- PCDHA8 (bs-11122R) at 1/300
dilution Secondary: IRDye800CW Goat Anti-
Rabbit IgG at 1/20000 dilution Predicted band
size: 100kD Observed band size: 100kD