

**bs-2585R****[ Primary Antibody ]****FOXF1 Rabbit pAb****Bioss**  
ANTIBODIES

www.bioss.com.cn

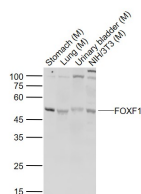
sales@bioss.com.cn

techsupport@bioss.com.cn

400-901-9800

**— DATASHEET —**

<b>Host:</b> Rabbit	<b>Isotype:</b> IgG	<b>Applications:</b> WB (1:500-2000)
<b>Clonality:</b> Polyclonal		<b>Reactivity:</b> Mouse (predicted: Human, Rat, Rabbit, Cow, Chicken, Dog)
<b>GeneID:</b> 2294	<b>SWISS:</b> Q12946	<b>Predicted MW.:</b> 40 kDa
<b>Target:</b> FOXF1		<b>Subcellular Location:</b> Nucleus
<b>Immunogen:</b> KLH conjugated synthetic peptide derived from human FOXF1: 285-379/379.		
<b>Purification:</b> affinity purified by Protein A		
<b>Concentration:</b> 1mg/ml		
<b>Storage:</b> 0.01M TBS (pH7.4) with 1% BSA, 0.02% Proclin300 and 50% Glycerol. Shipped at 4°C. Store at -20°C for one year. Avoid repeated freeze/thaw cycles.		
<b>Background:</b> This gene belongs to the forkhead family of transcription factors which is characterized by a distinct forkhead domain. The specific function of this gene has not yet been determined; however, it may play a role in the regulation of pulmonary genes as well as embryonic development. [provided by RefSeq, Jul 2008]		

**— VALIDATION IMAGES —**

Sample: Lane 1: Stomach (Mouse) Lysate at 40 ug  
Lane 2: Lung (Mouse) Lysate at 40 ug  
Lane 3: Urinary bladder (Mouse) Lysate at 40 ug  
Lane 4: NIH/3T3 (Mouse) Cell Lysate at 30 ug  
Primary: Anti-FOXF1 (bs-2585R) at 1/1000 dilution  
Secondary: IRDye800CW Goat Anti-Rabbit IgG at 1/20000 dilution  
Predicted band size: 40 kD  
Observed band size: 50 kD