

bs-2573R**[Primary Antibody]****CD32 Rabbit pAb**

Bioss
ANTIBODIES

www.bioss.com.cn

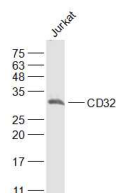
sales@bioss.com.cn

techsupport@bioss.com.cn

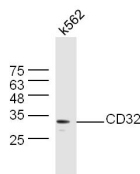
400-901-9800

— DATASHEET —

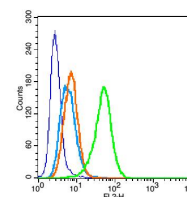
| | | |
|--|----------------------|---|
| Host: Rabbit | Isotype: IgG | Applications: WB (1:500-2000) Flow-Cyt (0.2µg/Test) |
| Clonality: Polyclonal | | Reactivity: Human |
| GeneID: 2212 | SWISS: P12318 | |
| Target: CD32 | | |
| Immunogen: KLH conjugated synthetic peptide derived from human Fc gamma RII a: 201-300/317. | | |
| Purification: affinity purified by Protein A | | |
| Concentration: 1mg/ml | | |
| Storage: 0.01M TBS (pH7.4) with 1% BSA, 0.02% Proclin300 and 50% Glycerol. Shipped at 4°C. Store at -20°C for one year. Avoid repeated freeze/thaw cycles. | | |
| Background: This gene encodes one member of a family of immunoglobulin Fc receptor genes found on the surface of many immune response cells. The protein encoded by this gene is a cell surface receptor found on phagocytic cells such as macrophages and neutrophils, and is involved in the process of phagocytosis and clearing of immune complexes. Alternative splicing results in multiple transcript variants. [provided by RefSeq, Oct 2008] | | |
| | | Predicted MW.: 31 kDa |
| | | Subcellular Location: Cell membrane |

— VALIDATION IMAGES —

Sample: Jurkat(Human) Cell Lysate at 30 ug
Primary: Anti-CD32 (bs-2573R) at 1/1000 dilution
Secondary: IRDye800CW Goat Anti-Rabbit IgG at 1/20000 dilution Predicted band size: 31 kD
Observed band size: 31 kD



Sample: K562 Cell Lysate at 30 ug Primary: Anti-CD32 (bs-2573R) at 1/300 dilution Secondary: IRDye800CW Goat Anti-Rabbit IgG at 1/20000 dilution Predicted band size: 31 kD Observed band size: 33 kD



Blank control: U937 (blue). Primary Antibody: Rabbit Anti-CD32 antibody(bs-2573R), Dilution: 0.2µg in 100 µL 1X PBS containing 0.5% BSA; Isotype Control Antibody: Rabbit IgG(orange), used under the same conditions; Secondary Antibody: Goat anti-rabbit IgG-PE(white blue), Dilution: 1:200 in 1 X PBS containing 0.5% BSA. Protocol The cells were fixed with 2% paraformaldehyde (10 min). Primary antibody (bs-2573R, 0.2µg /1x10⁶ cells) were incubated for 30 min on the ice, followed by 1 X PBS containing 0.5% BSA + 1 0% goat serum (15 min) to block non-specific protein-protein interactions. Then the Goat Anti-rabbit IgG/PE antibody was added into the blocking buffer mentioned above to react with the primary antibody at 1/200 dilution for 30 min on ice. Acquisition of 20,000 events was performed.