

bs-2570R**[Primary Antibody]****DPP4/CD26 Rabbit pAb****Bioss**
ANTIBODIES

www.bioss.com.cn

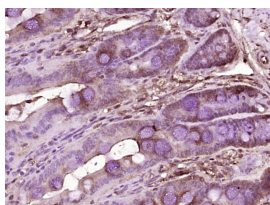
sales@bioss.com.cn

techsupport@bioss.com.cn

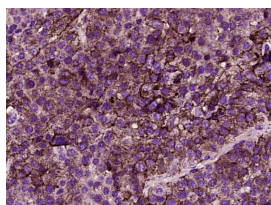
400-901-9800

DATASHEET

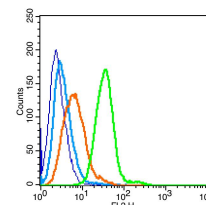
Host: Rabbit	Isotype: IgG	Applications: IHC-P (1:100-500)
Clonality: Polyclonal		IHC-F (1:100-500)
GeneID: 1803	SWISS: P27487	IF (1:100-500)
Target: DPP4/CD26		Flow-Cyt (3µg/Test)
Immunogen: KLH conjugated synthetic peptide derived from human CD26: 661-766/766.		Reactivity: Human, Rat (predicted: Mouse, Rabbit, Pig, Cow, Horse)
Purification: affinity purified by Protein A		Predicted MW.: 84 kDa
Concentration: 1mg/ml		Subcellular Location: Cell membrane ,Cytoplasm
Storage: 0.01M TBS (pH7.4) with 1% BSA, 0.02% Proclin300 and 50% Glycerol. Shipped at 4°C. Store at -20°C for one year. Avoid repeated freeze/thaw cycles.		
Background: The DPP4 gene encodes dipeptidyl peptidase 4, which is identical to adenosine deaminase complexing protein-2, and to the T-cell activation antigen CD26. It is an intrinsic type II transmembrane glycoprotein and a serine exopeptidase that cleaves X-proline dipeptides from the N-terminus of polypeptides. Dipeptidyl peptidase 4 is highly involved in glucose and insulin metabolism, as well as in immune regulation. This protein was shown to be a functional receptor for Middle East respiratory syndrome coronavirus (MERS-CoV), and protein modeling suggests that it may play a similar role with SARS-CoV-2, the virus responsible for COVID-19. [provided by RefSeq, Apr 2020]		

VALIDATION IMAGES

Paraformaldehyde-fixed, paraffin embedded (rat intestine tissue); Antigen retrieval by boiling in sodium citrate buffer (pH6.0) for 15min; Block endogenous peroxidase by 3% hydrogen peroxide for 20 minutes; Blocking buffer (normal goat serum) at 37°C for 30min; Antibody incubation with (CD26) Polyclonal Antibody, Unconjugated (bs-2570R) at 1:400 overnight at 4°C, followed by operating according to SP Kit(Rabbit) (sp-0023) instructions and DAB staining.



Paraformaldehyde-fixed, paraffin embedded (Human melanoma); Antigen retrieval by boiling in sodium citrate buffer (pH6.0) for 15min; Block endogenous peroxidase by 3% hydrogen peroxide for 20 minutes; Blocking buffer (normal goat serum) at 37°C for 30min; Antibody incubation with (CD26) Polyclonal Antibody, Unconjugated (bs-2570R) at 1:400 overnight at 4°C, followed by operating according to SP Kit(Rabbit) (sp-0023) instructions and DAB staining.



Blank control(blue): Raji (fixed with 2% paraformaldehyde (10 min)). Primary Antibody: Rabbit Anti-CD26 antibody(bs-2570R), Dilution: 3µg in 100 µL 1X PBS containing 0.5% BSA; Isotype Control Antibody: Rabbit IgG(orange), used under the same conditions; Secondary Antibody: Goat anti-rabbit IgG-PE(white blue), Dilution: 1:200 in 1 X PBS containing 0.5% BSA.

SELECTED CITATIONS

- **[IF=5.99]** Eckerle, Isabella. "Replicative Capacity of MERS Coronavirus in Livestock Cell Lines." Emerging Infectious Diseases 2014 Other ;="Goat". 24457147
- **[IF=0.68]** Lu Z, Qi L, Bo XJ, Liu GD, Wang JM, Li G. Expression of CD26 and CXCR4 in prostate carcinoma and its relationship with clinical parameters. CD26 and CXCR4 expression shows correlation with prostate cancer. J Res Med Sci 2013;18:647-52 Other ;="Human". 24379839

Important Note: This product as supplied is intended for research use only, not for use in human, therapeutic or diagnostic applications.