

bs-13397R**[Primary Antibody]****GPX7 Rabbit pAb****BioSS**
ANTIBODIES

www.bioss.com.cn

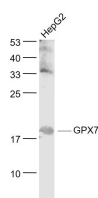
sales@bioss.com.cn

techsupport@bioss.com.cn

400-901-9800

— DATASHEET —

Host: Rabbit	Isotype: IgG	Applications: WB (1:500-2000)
Clonality: Polyclonal		Reactivity: Human (predicted: Mouse, Rat, Rabbit, Cow, Chicken, Monkey)
GeneID: 2882	SWISS: Q96SL4	
Target: GPX7		Predicted MW.: 19 kDa
Immunogen: KLH conjugated synthetic peptide derived from human GPX7/Glutathione Peroxidase 7: 11-110/187.		Subcellular Location: Secreted
Purification: affinity purified by Protein A		
Concentration: 1mg/ml		
Storage: 0.01M TBS (pH7.4) with 1% BSA, 0.02% Proclin300 and 50% Glycerol. Shipped at 4°C. Store at -20°C for one year. Avoid repeated freeze/thaw cycles.		
Background: Glutathione peroxidase (GPx) enzymes are generally selenium-containing tetrameric glycoproteins that help prevent lipid peroxidation of cell membranes. GPx enzymes reduce lipid hydroperoxides to alcohols and reduce free hydrogen peroxide to water. GPx members are among the few proteins known in higher vertebrates to contain selenocysteine, which occurs at the active site of glutathione peroxidase and is coded by the nonsense (stop) codon TGA. There are eight GPx homologs (GPx-1-8). GPx-7 (glutathione peroxidase 7), also known as GPX6, CL683 or NPGPx, is a 187 amino acid secreted protein belonging to the glutathione peroxidase family. GPx-7 catalyzes the reaction of glutathione into glutathione disulfide and is encoded by a gene located on human chromosome 1, which spans 260 million base pairs, contains over 3,000 genes and comprises nearly 8% of the human genome.		

— VALIDATION IMAGES —

Sample: HepG2(Human) Cell Lysate at 30 ug
Primary: Anti- GPX7 (bs-13397R) at 1/1000
dilution Secondary: IRDye800CW Goat Anti-
Rabbit IgG at 1/20000 dilution Predicted band
size: 19 kD Observed band size: 19 kD