

BH0139**[Primary Antibody]****BioSS**
ANTIBODIES

www.bioss.com.cn

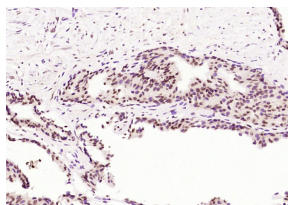
sales@bioss.com.cn

techsupport@bioss.com.cn

400-901-9800

AR/Androgen receptor(ready to use) Mouse mAb**— DATASHEET —**

Host: Mouse	Isotype: IgG2b	Applications: IHC-P IHC-F IF ICC/IF Reactivity: Human Predicted MW.: 101 kDa Subcellular Location: Cytoplasm ,Nucleus
Clonality: Monoclonal	CloneNo.: 7D11	
GeneID: 367	SWISS: P10275	
Target: AR/Androgen receptor(ready to use)		
Purification: affinity purified by Protein G		
Storage: 0.01M PBS (pH7.4) with 1% BSA and 0.02% Proclin300. Store at 2-8°C for one year. Avoid repeated freeze/thaw cycles.		
Background: The androgen receptor gene is more than 90 kb long and codes for a protein that has 3 major functional domains: the N-terminal domain, DNA-binding domain, and androgen-binding domain. The protein functions as a steroid-hormone activated transcription factor. Upon binding the hormone ligand, the receptor dissociates from accessory proteins, translocates into the nucleus, dimerizes, and then stimulates transcription of androgen responsive genes. This gene contains 2 polymorphic trinucleotide repeat segments that encode polyglutamine and polyglycine tracts in the N-terminal transactivation domain of its protein. Expansion of the polyglutamine tract causes spinal bulbar muscular atrophy (Kennedy disease). Mutations in this gene are also associated with complete androgen insensitivity (CAIS). Two alternatively spliced variants encoding distinct isoforms have been described. [provided by RefSeq, Jul 2008]		

— VALIDATION IMAGES —

Paraformaldehyde-fixed, paraffin embedded (human prostate); Antigen retrieval by boiling in sodium citrate buffer (pH6.0) for 15min; Block endogenous peroxidase by 3% hydrogen peroxide for 20 minutes; Blocking buffer (normal goat serum) at 37°C for 30min; Antibody incubation with (Androgen Receptor(AR)) Monoclonal Antibody, Unconjugated (BH0139) overnight at 4°C, followed by operating according to SP Kit(Mouse)(sp-0024) instructions and DAB staining.