

bs-9738R**[Primary Antibody]****FASP1 Rabbit pAb****BioSS**
ANTIBODIES

www.bioss.com.cn

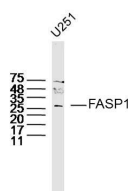
sales@bioss.com.cn

techsupport@bioss.com.cn

400-901-9800

— DATASHEET —

Host: Rabbit	Isotype: IgG	Applications: WB (1:500-2000)
Clonality: Polyclonal		Reactivity: Human (predicted: Mouse, Rat, Sheep, Dog, Horse)
GeneID: 54069	SWISS: Q9NYP9	
Target: FASP1		Predicted MW.: 26 kDa
Immunogen: KLH conjugated synthetic peptide derived from human FASP1/C21orf45: 131-233/233.		Subcellular Location: Nucleus
Purification: affinity purified by Protein A		
Concentration: 1mg/ml		
Storage: 0.01M TBS (pH7.4) with 1% BSA, 0.02% Proclin300 and 50% Glycerol. Shipped at 4°C. Store at -20°C for one year. Avoid repeated freeze/thaw cycles.		
Background: Mapping to chromosome 21, the FASP1 gene (FAPP1-associated protein 1) encodes a 233 amino acid protein that is homologous to the fission yeast protein Mis18. In yeast, Mis18 is localized to the centrosome and forms a complex with Mis16 to maintain the deacetylated state of histones specifically in the central core of centromeres. FASP1, also known as Protein Mis18-alpha and C21orf45, is required for the recruitment of CENP-A to centrosomes and is thereby essential for normal chromosome segregation during mitosis. With expression in testis, FASP1 exists as a homodimer, a heterodimer with MIS18B or is present in a complex containing other Mis18 family members. FASP1 has been shown to bind to pp5644 in Hela cells, where overexpression of pp5644 leads to inhibited growth and colony formation.		

— VALIDATION IMAGES —

Sample: U251 Cell (Human) Lysate at 30 ug
Primary: Anti-FASP1 (bs-9738R) at 1/300 dilution
Secondary: IRDye800CW Goat Anti-Rabbit IgG at 1/20000 dilution Predicted band size: 26kD
Observed band size: 26kD