

bs-9725R**[Primary Antibody]****CHPT1 Rabbit pAb****Bioss**
ANTIBODIES

www.bioss.com.cn

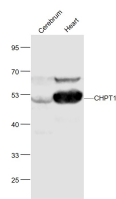
sales@bioss.com.cn

techsupport@bioss.com.cn

400-901-9800

— DATASHEET —

Host: Rabbit Clonality: Polyclonal GeneID: 56994 Target: CHPT1 Immunogen: KLH conjugated synthetic peptide derived from human CHPT1: 61-160/406. Purification: affinity purified by Protein A Concentration: 1mg/ml Storage: 0.01M TBS (pH7.4) with 1% BSA, 0.02% Proclin300 and 50% Glycerol. Shipped at 4°C. Store at -20°C for one year. Avoid repeated freeze/thaw cycles. Background: CHPT1, also known as AAPT1-like protein and Diacylglycerol cholinephosphotransferase 1, is a 406 amino acid multi-pass membrane protein that is localized to the golgi apparatus. By catalyzing the phosphatidylcholine biosynthesis from CDP-choline, it plays an essential role in the formation and maintenance of vesicular membranes. CHPT1 is most abundant in testis, as well as small intestine, heart, colon, spleen and prostate. Expression of CHPT1 is increased in cancerous breast cells as compared to normal breast cell lines and it has been determined that the CHPT1 gene exhibits mutations within the cancerous cells. Interestingly, exposure to mustard gas significantly decreases CHPT1 gene expression and activity, an event that may play an important role in the development of acute respiratory distress syndrome (ARDS). There are two isoforms of CHPT1 that are produced as a result of alternative splicing events.	Isotype: IgG SWISS: Q8WUD6 Applications: WB (1:500-2000) Reactivity: Mouse (predicted: Human, Rat, Rabbit, Pig, Sheep, Cow, Chicken, Dog, Horse) Predicted MW.: 45 kDa Subcellular Location: Cell membrane ,Cytoplasm
---	--

— VALIDATION IMAGES —

Sample: Cerebrum (Mouse) Lysate at 40 ug Heart
 (Mouse) Lysate at 40 ug Primary: Anti-CHPT1
 (bs-9725R) at 1/1000 dilution Secondary:
 IRDye800CW Goat Anti-Rabbit IgG at 1/20000
 dilution Predicted band size: 28'50 kD Observed
 band size: 50 kD