

bs-7822R**[Primary Antibody]****POC5 Rabbit pAb****Bioss**
ANTIBODIES

www.bioss.com.cn

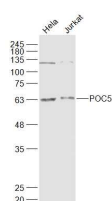
sales@bioss.com.cn

techsupport@bioss.com.cn

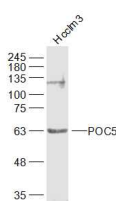
400-901-9800

— DATASHEET —

Host: Rabbit	Isotype: IgG	Applications: WB (1:500-2000)
Clonality: Polyclonal		Reactivity: Human (predicted: Mouse, Rat, Rabbit, Pig, Sheep, Cow, Dog, Horse)
GeneID: 134359	SWISS: Q8NA72	
Target: POC5		Predicted MW.: 40, 63 kDa
Immunogen: KLH conjugated synthetic peptide derived from human POC5: 301-400/575.		Subcellular Location: Cytoplasm
Purification: affinity purified by Protein A		
Concentration: 1mg/ml		
Storage: 0.01M TBS (pH7.4) with 1% BSA, 0.02% Proclin300 and 50% Glycerol. Shipped at 4°C. Store at -20°C for one year. Avoid repeated freeze/thaw cycles.		
Background: Essential for the assembly of the distal half of centrioles, required for centriole elongation.		

— VALIDATION IMAGES —

Sample: HeLa(Human) Cell Lysate at 30 ug
Jurkat(Human) Cell Lysate at 30 ug Primary:
Anti-POC5 (bs-7822R) at 1/1000 dilution
Secondary: IRDye800CW Goat Anti-Rabbit IgG at
1/20000 dilution Predicted band size: 60/43 kD
Observed band size: 63 kD



Sample: Hcclm3(Human) Cell Lysate at 30 ug
Primary: Anti-POC5 (bs-7822R) at 1/1000 dilution
Secondary: IRDye800CW Goat Anti-Rabbit IgG at
1/20000 dilution Predicted band size: 60/43 kD
Observed band size: 63 kD