

bs-6385R

[Primary Antibody]

Bioss
ANTIBODIES

www.bioss.com.cn

sales@bioss.com.cn

techsupport@bioss.com.cn

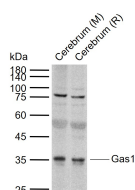
400-901-9800

Gas1 Rabbit pAb

— DATASHEET —

Host: Rabbit	Isotype: IgG	Applications: WB (1:500-2000)
Clonality: Polyclonal		
GeneID: 2619	SWISS: P54826	
Target: Gas1		
Immunogen: KLH conjugated synthetic peptide derived from human Gas1: 101-200/345.		
Purification: affinity purified by Protein A		Reactivity: Mouse, Rat (predicted: Human, Pig, Sheep, Cow, Chicken, Dog)
Concentration: 1mg/ml		Predicted MW.: 29/32 kDa
Storage: 0.01M TBS (pH7.4) with 1% BSA, 0.02% Proclin300 and 50% Glycerol. Shipped at 4°C. Store at -20°C for one year. Avoid repeated freeze/thaw cycles.		Subcellular Location: Cell membrane
Background: Growth arrest-specific 1 plays a role in growth suppression. GAS1 blocks entry to S phase and prevents cycling of normal and transformed cells. Gas1 is a putative tumor suppressor gene.		

— VALIDATION IMAGES —



Sample: Lane 1: Mouse Cerebrum tissue lysates

Lane 2: Rat Cerebrum tissue lysates Primary:

Anti-Gas1 (bs-6385R) at 1/1000 dilution

Secondary: IRDye800CW Goat Anti-Rabbit IgG at

1/20000 dilution Predicted band size: 29/32 kDa

Observed band size: 35 kDa