

bs-6381R**[Primary Antibody]****FAM107A Rabbit pAb****Bioss**
ANTIBODIES

www.bioss.com.cn

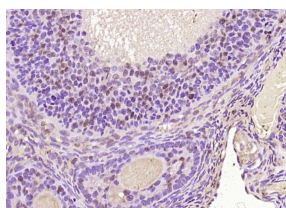
sales@bioss.com.cn

techsupport@bioss.com.cn

400-901-9800

— DATASHEET —

Host: Rabbit	Isotype: IgG	Applications: IHC-P (1:100-500) IHC-F (1:100-500) IF (1:100-500)
Clonality: Polyclonal		
GeneID: 11170		
Target: FAM107A		Reactivity: Rat (predicted: Human, Mouse, Rabbit, Pig, Cow, Chicken, Dog)
Immunogen: KLH conjugated synthetic peptide derived from human FAM107A: 11-110/144.		
Purification: affinity purified by Protein A		Predicted MW.: 17 kDa
Concentration: 1mg/ml		Subcellular Location: Nucleus
Storage: 0.01M TBS (pH7.4) with 1% BSA, 0.02% Proclin300 and 50% Glycerol. Shipped at 4°C. Store at -20°C for one year. Avoid repeated freeze/thaw cycles.		
Background: When transfected into cell lines in which it is not expressed, suppresses cell growth. May play a role in tumor development.		

— VALIDATION IMAGES —

Paraformaldehyde-fixed, paraffin embedded (rat ovary tissue); Antigen retrieval by boiling in sodium citrate buffer (pH6.0) for 15min; Block endogenous peroxidase by 3% hydrogen peroxide for 20 minutes; Blocking buffer (normal goat serum) at 37°C for 30min; Antibody incubation with (FAM107A) Polyclonal Antibody, Unconjugated (bs-6381R) at 1:200 overnight at 4°C, followed by operating according to SP Kit(Rabbit) (sp-0023) instructions and DAB staining.

— SELECTED CITATIONS —

- **[IF=3.4]** Zhen Xiao. et al. Identification and immunological characterization of genes associated with ferroptosis in Alzheimer's disease and experimental demonstration. MOL MED REP. 2024 Sep;30(3):1-15 WB ;Human. 38963039