

**bs-20086R**

**[ Primary Antibody ]**

## FTMT Rabbit pAb

**BioSS**  
ANTIBODIES

www.bioss.com.cn

sales@bioss.com.cn

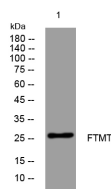
techsupport@bioss.com.cn

400-901-9800

### — DATASHEET —

<b>Host:</b> Rabbit	<b>Isotype:</b> IgG	<b>Applications:</b> WB (1:500-2000)
<b>Clonality:</b> Polyclonal		<b>Reactivity:</b> Human (predicted: Mouse, Rat, Rabbit, Pig, Cow, Horse)
<b>GeneID:</b> 94033	<b>SWISS:</b> Q8N4E7	
<b>Target:</b> FTMT		<b>Predicted MW.:</b> 22 kDa
<b>Immunogen:</b> KLH conjugated synthetic peptide derived from human FTMT: 51-150/242.		<b>Subcellular Location:</b> Cytoplasm
<b>Purification:</b> affinity purified by Protein A		
<b>Concentration:</b> 1mg/ml		
<b>Storage:</b> 0.01M TBS (pH7.4) with 1% BSA, 0.02% Proclin300 and 50% Glycerol. Shipped at 4°C. Store at -20°C for one year. Avoid repeated freeze/thaw cycles.		

### — VALIDATION IMAGES —



Western blot analysis of lysates from VEC cells,  
primary antibody was diluted at 1:1000, 4° over  
night