

bs-6569R**[Primary Antibody]****RLBP1L1 Rabbit pAb****Bioss**
ANTIBODIES

www.bioss.com.cn

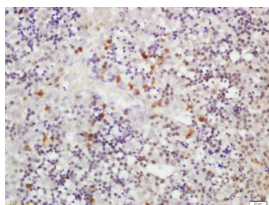
sales@bioss.com.cn

techsupport@bioss.com.cn

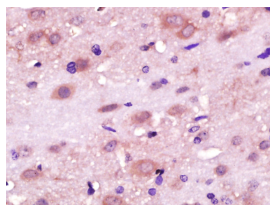
400-901-9800

— DATASHEET —

| | | |
|--|----------------------|---|
| Host: Rabbit | Isotype: IgG | Applications: IHC-P (1:100-500) IHC-F (1:100-500) IF (1:100-500) Reactivity: Mouse, Rat (predicted: Human, Rabbit, Pig, Sheep, Cow, Chicken, Dog, Horse) Predicted MW.: 41 kDa Subcellular Location: Cell membrane ,Cytoplasm |
| Clonality: Polyclonal | | |
| GeneID: 157807 | SWISS: Q8IUQ0 | |
| Target: RLBP1L1 | | |
| Immunogen: KLH conjugated synthetic peptide derived from human ICRF/REG1 alpha: 231-330/354. | | |
| Purification: affinity purified by Protein A | | |
| Concentration: 1mg/ml | | |
| Storage: 0.01M TBS (pH7.4) with 1% BSA, 0.02% Proclin300 and 50% Glycerol. Shipped at 4°C. Store at -20°C for one year. Avoid repeated freeze/thaw cycles. | | |
| Background: RLBP1L1 is a protein of unknown function. It has 45% identity with human CRALBP (Cellular retinaldehyde-binding protein) which carries 11-cis-retinol or 11-cis-retinaldehyde as endogenous ligands and may function as a substrate carrier protein that modulates interaction of these retinoids with visual cycle enzymes. RLBP1L1 is expressed in brain, and several human carcinoma cell lines. | | |

— VALIDATION IMAGES —

Tissue/cell: mouse fetal liver; 4%
Paraformaldehyde-fixed and paraffin-
embedded; Antigen retrieval: citrate buffer (
0.01M, pH 6.0), Boiling bathing for 15min; Block
endogenous peroxidase by 3% Hydrogen
peroxide for 30min; Blocking buffer (normal goat
serum, C-0005) at 37°C for 20 min; Incubation:
Anti-RLBP1L1 Polyclonal Antibody,
Unconjugated (bs-6569R) 1:200, overnight at 4°C,
followed by conjugation to the secondary
antibody (SP-0023) and DAB (C-0010) staining



Paraformaldehyde-fixed, paraffin embedded
(Rat brain); Antigen retrieval by boiling in
sodium citrate buffer (pH6.0) for 15min; Block
endogenous peroxidase by 3% hydrogen
peroxide for 20 minutes; Blocking buffer (normal
goat serum) at 37°C for 30min; Antibody
incubation with (RLBP1L1) Polyclonal Antibody,
Unconjugated (bs-6569R) at 1:400 overnight at
4°C, followed by operating according to SP
Kit (Rabbit) (sp-0023) instructions and DAB
staining.