

bs-12051R**[Primary Antibody]****Bioss**
ANTIBODIES

www.bioss.com.cn

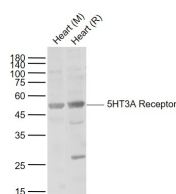
sales@bioss.com.cn

techsupport@bioss.com.cn

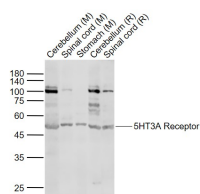
400-901-9800

5HT3A Receptor Rabbit pAb**— DATASHEET —**

Host: Rabbit	Isotype: IgG	Applications: WB (1:500-2000)
Clonality: Polyclonal		Reactivity: Human, Mouse, Rat (predicted: Pig, Sheep, Cow, Dog, Horse)
GeneID: 3359	SWISS: P46098	Predicted MW.: 53 kDa
Target: 5HT3A Receptor		Subcellular Location: Cell membrane
Immunogen: KLH conjugated synthetic peptide derived from human 5HT3A Receptor: 31-130/478. < Extracellular >		
Purification: affinity purified by Protein A		
Concentration: 1mg/ml		
Storage: 0.01M TBS (pH7.4) with 1% BSA, 0.02% Proclin300 and 50% Glycerol. Shipped at 4°C. Store at -20°C for one year. Avoid repeated freeze/thaw cycles.		
Background: The product of this gene belongs to the ligand-gated ion channel receptor superfamily. This gene encodes subunit A of the type 3 receptor for 5-hydroxytryptamine (serotonin), a biogenic hormone that functions as a neurotransmitter, a hormone, and a mitogen. This receptor causes fast, depolarizing responses in neurons after activation. It appears that the heteromeric combination of A and B subunits is necessary to provide the full functional features of this receptor, since either subunit alone results in receptors with very low conductance and response amplitude. Alternatively spliced transcript variants encoding different isoforms have been identified. Expressed in cerebral cortex, amygdala, hippocampus, and testis. Detected in monocytes of the spleen and tonsil, in small and large intestine, uterus, prostate, ovary and placenta. Belongs to the ligand-gated ionic channel (TC 1.A.9) family.		

— VALIDATION IMAGES —

Sample: Lane 1: Heart (Mouse) Lysate at 40 ug
Lane 2: Heart (Rat) Lysate at 40 ug Primary: Anti-5HT3A Receptor (bs-12051R) at 1/1000 dilution Secondary: IRDye800CW Goat Anti-Rabbit IgG at 1/20000 dilution Predicted band size: 52-55 kD Observed band size: 50 kD



Sample: Lane 1: Cerebellum (Mouse) Lysate at 40 ug
Lane 2: Spinal cord (Mouse) Lysate at 40 ug
Lane 3: Stomach (Mouse) Lysate at 40 ug Lane 4: Cerebellum (Rat) Lysate at 40 ug Lane 5: Spinal cord (Rat) Lysate at 40 ug Primary: Anti-5HT3A Receptor (bs-12051R) at 1/1000 dilution Secondary: IRDye800CW Goat Anti-Rabbit IgG at 1/20000 dilution Predicted band size: 52-55 kD Observed band size: 50 kD