

**bs-9712R****[ Primary Antibody ]****NHEDC2 Rabbit pAb****BioSS**  
**ANTIBODIES**

www.bioss.com.cn

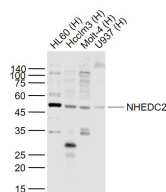
sales@bioss.com.cn

techsupport@bioss.com.cn

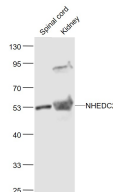
400-901-9800

**— DATASHEET —**

<b>Host:</b> Rabbit <b>Clonality:</b> Polyclonal <b>GeneID:</b> 133308 <b>Target:</b> NHEDC2 <b>Immunogen:</b> KLH conjugated synthetic peptide derived from human NHEDC2: 151-250/537. <b>Purification:</b> affinity purified by Protein A <b>Concentration:</b> 1mg/ml <b>Storage:</b> 0.01M TBS (pH7.4) with 1% BSA, 0.02% Proclin300 and 50% Glycerol. Shipped at 4°C. Store at -20°C for one year. Avoid repeated freeze/thaw cycles. <b>Background:</b> Na <sup>+</sup> /H <sup>+</sup> exchangers (NHEs) catalyze the transport of Na <sup>+</sup> in exchange for H <sup>+</sup> across membranes in organisms and are required for numerous physiological processes. NHEDC2 (Na <sup>+</sup> /H <sup>+</sup> exchanger-like domain-containing protein 2), also known as NHA2, is a 537 amino acid mitochondrial protein. NHEDC2 is involved in organelle volume homeostasis by catalyzing the exchange of protons for Na <sup>+</sup> and Li <sup>+</sup> across the inner mitochondrial membrane. Found in red blood cells, NHEDC2 is required for bone resorption activity and osteoclast differentiation. As a multi-pass membrane protein, NHEDC2 is expressed as two isoforms produced by alternative splicing events.	<b>Isotype:</b> IgG <b>SWISS:</b> Q86UD5 <b>Applications:</b> WB (1:500-2000) <b>Reactivity:</b> Human, Mouse (predicted: Rat, Rabbit, Dog) <b>Predicted MW.:</b> 58 kDa <b>Subcellular Location:</b> Cell membrane ,Cytoplasm
---	---

**— VALIDATION IMAGES —**

Sample: Lane 1: HL60 (Human) Cell Lysate at 30 ug  
 Lane 2: Hcclm3 (Human) Cell Lysate at 30 ug  
 Lane 3: Molt-4 (Human) Cell Lysate at 30 ug  
 Lane 4: U937 (Human) Cell Lysate at 30 ug  
 Primary: Anti-NHEDC2 (bs-9712R) at 1/1000 dilution  
 Secondary: IRDye800CW Goat Anti-Rabbit IgG at 1/20000 dilution  
 Predicted band size: 50 kD  
 Observed band size: 50 kD



Sample: Spinal cord (Mouse) Lysate at 40 ug  
 Kidney (Mouse) Lysate at 40 ug  
 Primary: Anti-NHEDC2 (bs-9712R) at 1/1000 dilution  
 Secondary: IRDye800CW Goat Anti-Rabbit IgG at 1/20000 dilution  
 Predicted band size: 55 kD  
 Observed band size: 53 kD