

bs-9705R**[Primary Antibody]****Bioss**
ANTIBODIES

www.bioss.com.cn

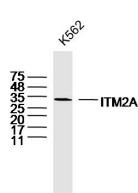
sales@bioss.com.cn

techsupport@bioss.com.cn

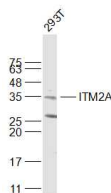
400-901-9800

ITM2A Rabbit pAb**— DATASHEET —**

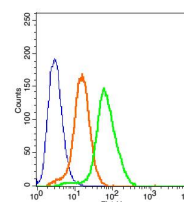
Host: Rabbit	Isotype: IgG	Applications: WB (1:500-2000) Flow-Cyt (1µg/Test) Reactivity: Human (predicted: Mouse, Rat, Rabbit, Pig) Predicted MW.: 30 kDa Subcellular Location: Cell membrane
Clonality: Polyclonal		
GeneID: 9452	SWISS: O43736	
Target: ITM2A		
Immunogen: KLH conjugated synthetic peptide derived from human ITM2A: 21-120/263.		
Purification: affinity purified by Protein A		
Concentration: 1mg/ml		
Storage: 0.01M TBS (pH7.4) with 1% BSA, 0.02% Proclin300 and 50% Glycerol. Shipped at 4°C. Store at -20°C for one year. Avoid repeated freeze/thaw cycles.		
Background: The type II integral membrane (ITM2) protein family consists of three members ITM2A (also designated E25), ITM2B and ITM2C. ITM2A expression is high in osteogenic and lymphoid tissues, while both ITM2B and ITM2C are expressed in brain. Mutations in the ITM2B gene can lead to familial British dementia (fbd), and autosomal dominant disease characterized by progressive dementia, spasticity, and cerebellar ataxia, or familial Danish dementia (fdd), an autosomal dominant disorder characterized by cataracts, deafness, progressive ataxia, and dementia. The ITM2A 263-amino acid protein contains an N-terminal cytosolic domain, an uncleaved signal anchor sequence, and a tyrosine-rich C-terminal domain. Human ITM2A shares 91% homology with mouse ITM2A.		

— VALIDATION IMAGES —

Sample: K562 Cell (Human) Lysate at 40 ug
 Primary: Anti-ITM2A (bs-9705R) at 1/300 dilution
 Secondary: IRDye800CW Goat Anti-Rabbit IgG at 1/20000 dilution Predicted band size: 30 kD
 Observed band size: 30 kD



Sample: 293T(Human) Cell Lysate at 30 ug
 Primary: Anti-ITM2A (bs-9705R) at 1/1000 dilution Secondary: IRDye800CW Goat Anti-Rabbit IgG at 1/20000 dilution Predicted band size: 30 kD Observed band size: 35 kD



Blank control(blue): 293T Cells(fixed with 2% paraformaldehyde (10 min)). Primary Antibody: Rabbit Anti-ITM2A/AF488 Conjugated antibody (bs-9705R-AF488), Dilution: 1µg in 100 µL 1X PBS containing 0.5% BSA; Isotype Control Antibody: Rabbit IgG/AF488(orange) ,used under the same conditions.