

bs-20450R**[Primary Antibody]****GLRB Rabbit pAb****Bioss**
ANTIBODIES

www.bioss.com.cn

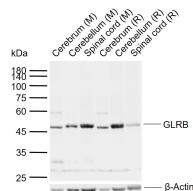
sales@bioss.com.cn

techsupport@bioss.com.cn

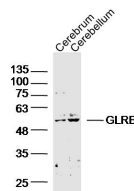
400-901-9800

— DATASHEET —

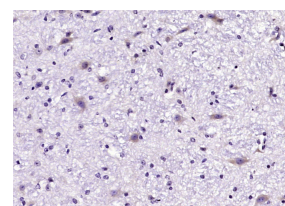
Host: Rabbit	Isotype: IgG	Applications: WB (1:500-2000) IHC-P (1:100-500) IHC-F (1:100-500) IF (1:100-500) Reactivity: Mouse, Rat (predicted: Human, Rabbit, Pig, Sheep, Cow, Dog, Horse) Predicted MW.: 54 kDa Subcellular Location: Cell membrane ,Cytoplasm
Clonality: Polyclonal		
GeneID: 2743	SWISS: P48167	
Target: GLRB		
Immunogen: KLH conjugated synthetic peptide derived from human GLRB: 51-150/497. < Extracellular >		
Purification: affinity purified by Protein A		
Concentration: 1mg/ml		
Storage: Preservative: 0.02% Proclin300, Constituents: 1% BSA, 0.01M PBS, pH7.4. Shipped at 4°C. Store at -20°C for one year. Avoid repeated freeze/thaw cycles.		
Background: GLRB (Glycine receptor beta) is a neurotransmitter-gated ion channel concentrated within the spinal cord and brainstem. Expression is also observed in several upper brain regions including the cortex, cerebellum, hippocampus and amygdala. Binding of glycine to GLRB increases the chloride conductance and thus produces hyperpolarization (inhibition of neuronal firing), controlling spinal reflexes and locomotor behavior.		

— VALIDATION IMAGES —

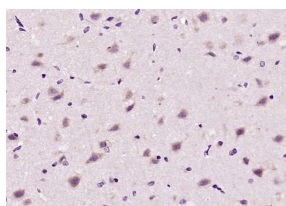
Sample: Lane 1: Mouse Cerebrum tissue lysates
Lane 2: Mouse Cerebellum tissue lysates Lane 3:
Mouse Spinal cord tissue lysates Lane 4: Rat
Cerebrum tissue lysates Lane 5: Rat Cerebellum
tissue lysates Lane 6: Rat Spinal cord tissue
lysates Primary: Anti-GLRB (bs-20450R) at 1/1000
dilution Secondary: IRDye800CW Goat Anti-
Rabbit IgG at 1/20000 dilution Predicted band
size: 54 kDa Observed band size: 47 kDa



Sample: Cerebrum (Mouse)Lysate at 40 ug
Cerebellum (Mouse)Lysate at 40 ug Primary:
Anti-GLRB(bs-20450R)at 1/300 dilution
Secondary: IRDye800CW Goat Anti-RabbitIgG at
1/20000 dilution Predicted band size: 54kD
Observed band size: 54kD



Paraformaldehyde-fixed, paraffin embedded
(mouse cerebellum); Antigen retrieval by boiling
in sodium citrate buffer (pH6.0) for 15min; Block
endogenous peroxidase by 3% hydrogen
peroxide for 20 minutes; Blocking buffer (normal
goat serum) at 37°C for 30min; Antibody
incubation with (GLRB) Polyclonal Antibody,
Unconjugated (bs-20450R) at 1:200 overnight at
4°C, followed by operating according to SP
Kit(Rabbit) (sp-0023) instructionsand DAB
staining.



Paraformaldehyde-fixed, paraffin embedded (rat
brain); Antigen retrieval by boiling in sodium
citrate buffer (pH6.0) for 15min; Block
endogenous peroxidase by 3% hydrogen
peroxide for 20 minutes; Blocking buffer (normal
goat serum) at 37°C for 30min; Antibody
incubation with (GLRB) Polyclonal Antibody,

Important Note: This product as supplied is intended for research use only, not for use in human, therapeutic or diagnostic applications.

Unconjugated (bs-20450R) at 1:200 overnight at 4°C, followed by operating according to SP Kit(Rabbit) (sp-0023) instructions and DAB staining.