

bs-20448R**[Primary Antibody]****Bioss**
ANTIBODIES

www.bioss.com.cn

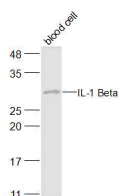
sales@bioss.com.cn

techsupport@bioss.com.cn

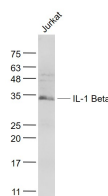
400-901-9800

IL-1 Beta Rabbit pAb**— DATASHEET —**

Host: Rabbit	Isotype: IgG	Applications: WB (1:500-2000)
Clonality: Polyclonal		Reactivity: Human, Mouse (predicted: Rat, Rabbit, Dog, Bee)
GeneID: 3553	SWISS: P01584	Predicted MW.: 17/32 kDa
Target: IL-1 Beta		Subcellular Location: Secreted
Immunogen: KLH conjugated synthetic peptide derived from human IL-1 Beta: 151-250/269.		
Purification: affinity purified by Protein A		
Concentration: 1mg/ml		
Storage: Preservative: 0.02% Proclin300, Constituents: 1% BSA, 0.01M PBS, pH7.4. Shipped at 4°C. Store at -20°C for one year. Avoid repeated freeze/thaw cycles.		
Background: The protein encoded by this gene is a member of the interleukin 1 cytokine family. This cytokine is produced by activated macrophages as a proprotein, which is proteolytically processed to its active form by caspase 1 (CASP1/ICE). This cytokine is an important mediator of the inflammatory response, and is involved in a variety of cellular activities, including cell proliferation, differentiation, and apoptosis. The induction of cyclooxygenase-2 (PTGS2/COX2) by this cytokine in the central nervous system (CNS) is found to contribute to inflammatory pain hypersensitivity. This gene and eight other interleukin 1 family genes form a cytokine gene cluster on chromosome 2. [provided by RefSeq, Jul 2008].		

— VALIDATION IMAGES —

Sample: Blood Cell (Mouse) Lysate at 40 ug
 Primary: Anti-IL-1 Beta (bs-20448R) at 1/300
 dilution Secondary: IRDye800CW Goat Anti-Rabbit IgG at 1/20000 dilution Predicted band size: 31 kD Observed band size: 31 kD



Sample: Jurkat(Human) Cell Lysate at 30 ug
 Primary: Anti- IL-1 Beta (bs-20448R) at 1/1000
 dilution Secondary: IRDye800CW Goat Anti-Rabbit IgG at 1/20000 dilution Predicted band size: 17 kD Observed band size: 31 kD

— SELECTED CITATIONS —

- **[IF=3.234]** Zhang H et al. FcγRI (CD64) contributes to the severity of immune inflammation through regulating NF-κB/NLRP3 inflammasome pathway. Life Sci. 2018 Aug 15;207:296-303. WB ;Mouse&Human. 29920250
- **[IF=3.177]** Peng Gao. et al. The role of maternal–foetal interface inflammation mediated by NLRP3 inflammasome in the pathogenesis of recurrent spontaneous abortion. Placenta. 2020 Nov;101:221 WB ;Human. 33022545
- **[IF=2.9]** Xinting Zhang. et al. Insulin combined with N-acetylcysteine attenuates type 1 diabetes-induced splenic inflammatory injury in canines by inhibiting the MAPKs-NF-κB signaling pathway and pyroptosis. J DIABETES COMPLICAT. 2024 Jul;:108805 WB ;Dog. 39089052
- **[IF=1.879]** Guangdi Li. et al. The relationship between abnormal Core binding factor-β expression in human cartilage and osteoarthritis. BMC Musculoskel Dis. 2021 Dec;22(1):1-13 WB ;Human. 33573620

Important Note: This product as supplied is intended for research use only, not for use in human, therapeutic or diagnostic applications.

- **[IF=1.9]** Xi-Kun Yuan. et al. Effects of Life-Long Exercise on Age-Related Inflammation, Apoptosis, Oxidative Stress, Ferroptosis Markers, and NRF2/KAEP 1/Klotho Pathway in Rat Kidneys. PHYSIOL RES. 2024 Aug 31;73(4):577-591 WB ;Rat. 39264079