

bs-12562R**[Primary Antibody]****Phospho1 Rabbit pAb****Bioss**
ANTIBODIES

www.bioss.com.cn

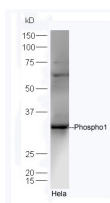
sales@bioss.com.cn

techsupport@bioss.com.cn

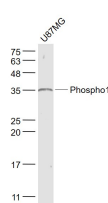
400-901-9800

— DATASHEET —

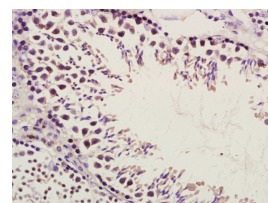
Host: Rabbit	Isotype: IgG	Applications: WB (1:500-2000) IHC-P (1:100-500) IHC-F (1:100-500) IF (1:100-500) Reactivity: Human, Mouse (predicted: Rat, Rabbit, Pig, Cow, Dog, Horse) Predicted MW.: 30 kDa Subcellular Location: Cytoplasm
Clonality: Polyclonal		
GeneID: 162466	SWISS: Q8TCT1	
Target: Phospho1		
Immunogen: KLH conjugated synthetic peptide derived from human Phospho1: 201-267/267.		
Purification: affinity purified by Protein A		
Concentration: 1mg/ml		
Storage: 0.01M TBS (pH7.4) with 1% BSA, 0.02% Proclin300 and 50% Glycerol. Shipped at 4°C. Store at -20°C for one year. Avoid repeated freeze/thaw cycles.		
Background: PHOSPHO1 is a 267 amino acid phosphatase that is a member of the haloacid dehalogenase (HAD) superfamily of magnesium-dependent hydrolases. PHOSPHO1 is highly expressed in bone and cartilage and localizes to the osteoid layer of the periosteum. PHOSPHO1 is restricted to sites of mineralization and its inhibition decreases the ability of matrix vesicles to calcify in bone, suggesting that the protein may play a role in the matrix mineralization process during skeletal development. PHOSPHO1 cleaves phosphoethanolamine and phosphocholine to generate inorganic phosphate for bone mineralization. PHOSPHO1 contains three catalytic motifs that are conserved within the haloacid dehalogenase superfamily.		

— VALIDATION IMAGES —

Sample: HeLa Cell (Human) Lysate at 40 ug
Primary: Anti-Phospho1 (bs-12562R) at 1/300 dilution
Secondary: HRP conjugated Goat-Anti-rabbit IgG (bs-0295G-HRP) at 1/5000 dilution
Predicted band size: 30 kD
Observed band size: 30 kD



Sample: U87MG(Human) Cell Lysate at 30 ug
Primary: Anti-Phospho1 (bs-12562R) at 1/1000 dilution
Secondary: IRDye800CW Goat Anti-Rabbit IgG at 1/20000 dilution
Predicted band size: 30 kD
Observed band size: 35 kD



Paraformaldehyde-fixed, paraffin embedded (Mouse testis); Antigen retrieval by boiling in sodium citrate buffer (pH6.0) for 15min; Block endogenous peroxidase by 3% hydrogen peroxide for 20 minutes; Blocking buffer (normal goat serum) at 37°C for 30min; Antibody incubation with (Phospho1) Polyclonal Antibody, Unconjugated (bs-12562R) at 1:500 overnight at 4°C, followed by a conjugated secondary (sp-0023) for 20 minutes and DAB staining.