

bs-10509R**[Primary Antibody]****NEP1-40 Rabbit pAb****BioSS**
ANTIBODIES

www.bioss.com.cn

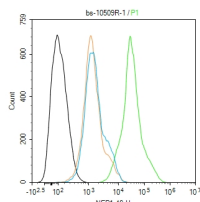
sales@bioss.com.cn

techsupport@bioss.com.cn

400-901-9800

DATASHEET

Host: Rabbit Clonality: Polyclonal GeneID: 57142 Target: NEP1-40 Immunogen: KLH conjugated synthetic peptide derived from human NEP1-40: 1001-1100/1192. Purification: affinity purified by Protein A Concentration: 1mg/ml Storage: 0.01M TBS (pH7.4) with 1% BSA, 0.02% Proclin300 and 50% Glycerol. Shipped at 4°C. Store at -20°C for one year. Avoid repeated freeze/thaw cycles. Background: This gene belongs to the family of reticulon encoding genes. Reticulons are associated with the endoplasmic reticulum, and are involved in neuroendocrine secretion or in membrane trafficking in neuroendocrine cells. The product of this gene is a potent neurite outgrowth inhibitor which may also help block the regeneration of the central nervous system in higher vertebrates. Alternatively spliced transcript variants derived both from differential splicing and differential promoter usage and encoding different isoforms have been identified. [provided by RefSeq, Jul 2008].	Isotype: IgG SWISS: Q9NQC3	Applications: Flow-Cyt (1µg/Test) Reactivity: Human (predicted: Mouse, Rat, Pig, Cow, Chicken, Dog) Predicted MW.: 22/131 kDa Subcellular Location: Cell membrane ,Cytoplasm
---	---	---

VALIDATION IMAGES

Blank control (black line) :HUVEC. Primary Antibody (green line): Rabbit Anti-NEP1-40 antibody (bs-10509R) Dilution:1ug/Test; Secondary Antibody (white blue line) : Goat anti-rabbit IgG-AF488 Dilution: 0.5ug/Test. Isotype control (orange line) : Normal Rabbit IgG Protocol The cells were fixed with 4% PFA (10min at room temperature)and then permeabilized with 90% ice-cold methanol for 20 min at -20°C, The cells were then incubated in 5%BSA to block non-specific protein-protein interactions for 30 min at room temperature .Cells stained with Primary Antibody for 30 min at room temperature. The secondary antibody used for 40 min at room temperature. Acquisition of 20,000 events was performed.