
EBFP Mouse mAb

Catalog Number: bsm-33185M

Target Protein: EBFP

Concentration: 1mg/ml

Form: Size : 100ul/500ul

Liquid

Size : 200ug (PBS only)

Lyophilized

Note: Centrifuge tubes before opening. Reconstitute the lyophilized product in distilled water. Optimal concentration should be determined by the end user.

Host: Mouse

Clonality: Monoclonal

Clone No.: 7B12

Isotype: IgG

Applications: WB (1:1000-5000)

Reactivity: Species independent

Purification: affinity purified by Protein G

Storage: Size : 100ul/500ul

0.01M TBS (pH7.4) with 1% BSA, 0.02% Proclin300 and 50% Glycerol.

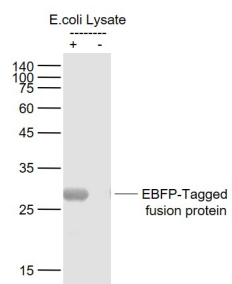
Size : 200ug (PBS only)

0.01M PBS

Shipped at 4°C. Store at -20°C for one year. Avoid repeated freeze/thaw cycles.

Background: Enhanced Blue Fluorescent Protein (EBFP) emits a strong blue fluorescence. EBFP can be used as protein "tags" to study the sub-cellular localization of proteins and/or their translocation upon stimulation or as markers for transfection in transient and stable expression systems.

VALIDATION IMAGES



Sample: Lane 1: EBFP-Tagged fusion protein (full length) Overexpression E.coli Lysate (Cat#: bs-33185P) at 4 ug Lane 2: Control (-) E.coli Lysate at 4 ug Primary: Anti- EBFP-Tag (bsm-33185M) at 1/1000 dilution
Secondary: IRDye800CW Goat Anti-Mouse IgG at 1/20000 dilution Predicted band size: 26 kD Observed band size: 26 kD