

bs-0014R**[Primary Antibody]****Bioss**
ANTIBODIES

www.bioss.com.cn

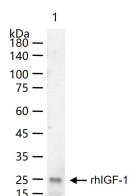
sales@bioss.com.cn

techsupport@bioss.com.cn

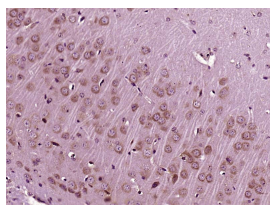
400-901-9800

IGF 1 Rabbit pAb**— DATASHEET —**

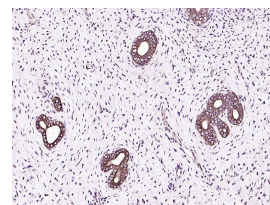
Host: Rabbit	Isotype: IgG	Applications: WB (1:500-2000)
Clonality: Polyclonal		IHC-P (1:100-500)
GeneID: 3479	SWISS: P05019	IHC-F (1:100-500)
Target: IGF 1		IF (1:100-500)
Immunogen: KLH conjugated synthetic peptide derived from human IGF-1: 49-100/195.		Reactivity: Human, Mouse, Rat (predicted: Rabbit, Pig, Sheep, Cow, Dog)
Purification: affinity purified by Protein A		
Concentration: 1mg/ml		Predicted MW.: 7.7/21 kDa
Storage: 0.01M TBS (pH7.4) with 1% BSA, 0.02% Proclin300 and 50% Glycerol. Shipped at 4°C. Store at -20°C for one year. Avoid repeated freeze/thaw cycles.		Subcellular Location: Secreted
Background: The protein encoded by this gene is similar to insulin in function and structure and is a member of a family of proteins involved in mediating growth and development. The encoded protein is processed from a precursor, bound by a specific receptor, and secreted. Defects in this gene are a cause of insulin-like growth factor I deficiency. Several transcript variants encoding different isoforms have been found for this gene.[provided by RefSeq, Mar 2009]		

— VALIDATION IMAGES —

20 ng rhIGF-1 protein, Trx & His (bs-41216P) per lane probed with IGF 1 polyclonal antibody respectively, unconjugated (bs-0014R) at 1:1000 dilution and 4°C overnight incubation. Followed by corresponding conjugated secondary antibody incubation at r.t. for 60 min.



Paraformaldehyde-fixed, paraffin embedded (Mouse brain); Antigen retrieval by boiling in sodium citrate buffer (pH6.0) for 15min; Block endogenous peroxidase by 3% hydrogen peroxide for 20 minutes; Blocking buffer (normal goat serum) at 37°C for 30min; Antibody incubation with (IGF 1) Polyclonal Antibody, Unconjugated (bs-0014R) at 1:400 overnight at 4°C, followed by operating according to SP Kit(Rabbit) (sp-0023) instructions and DAB staining.



Paraformaldehyde-fixed, paraffin embedded (rat uterus); Antigen retrieval by boiling in sodium citrate buffer (pH6.0) for 15min; Block endogenous peroxidase by 3% hydrogen peroxide for 20 minutes; Blocking buffer (normal goat serum) at 37°C for 30min; Antibody incubation with (IGF 1) Polyclonal Antibody, Unconjugated (bs-0014R) at 1:200 overnight at 4°C, followed by operating according to SP Kit(Rabbit) (sp-0023) instructions and DAB staining.

— SELECTED CITATIONS —

- **[IF=8.307]** Yue Wang. et al. Potential use of bioactive nanofibrous dural substitutes with controlled release of IGF-1 for neuroprotection after traumatic brain injury. NANOSCALE. 2022 Nov;; IF ;Human. 36468670
- **[IF=8.025]** Qinqin Hu. et al. An injectable thermosensitive Pluronic F127/hyaluronic acid hydrogel loaded with human umbilical cord mesenchymal stem cells and asiaticoside microspheres for uterine scar repair. INT J BIOL MACROMOL. 2022 Jul;; IF ;Rat. 35902020
- **[IF=7.666]** Ryo Honma. et al. Immunomodulatory Macrophages Enable E-MNC Therapy for Radiation-Induced Salivary Gland Hypofunction. CELLS-BASEL. 2023 Jan;12(10):1417 ICC,IHC ;Mouse. 10.3390/cells12101417

Important Note: This product as supplied is intended for research use only, not for use in human, therapeutic or diagnostic applications.

- **[IF=6.575]** Qiyu Gan. et al. Prognostic Value and Immune Infiltration of HPV-Related Genes in the Immune Microenvironment of Cervical Squamous Cell Carcinoma and Endocervical Adenocarcinoma. *CANCERS*. 2023 Jan;15(5):1419 IHC ;Human. 36900213
- **[IF=6.208]** Akihito Sotome. et al. Spinal Canal and Spinal Cord in Rat Continue to Grow Even after Sexual Maturation: Anatomical Study and Molecular Proposition. *INT J MOL SCI*. 2022 Jan;23(24):16076 WB ;Rat. 36555713