

bs-13380R**[Primary Antibody]****GLT28D1 Rabbit pAb****Bioss**
ANTIBODIES

www.bioss.com.cn

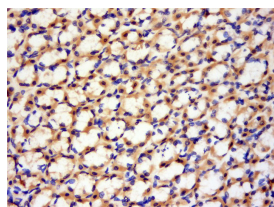
sales@bioss.com.cn

techsupport@bioss.com.cn

400-901-9800

— DATASHEET —

Host: Rabbit	Isotype: IgG	Applications: IHC-P (1:100-500) IHC-F (1:100-500) IF (1:100-500) Reactivity: Rat (predicted: Human) Predicted MW.: 126 kDa Subcellular Location: Cell membrane ,Cytoplasm
Clonality: Polyclonal		
GeneID: 79868	SWISS: Q9NP73	
Target: GLT28D1		
Immunogen: KLH conjugated synthetic peptide derived from human GLT28D1/ALG13: 21-120/1137.		
Purification: affinity purified by Protein A		
Concentration: 1mg/ml		
Storage: 0.01M TBS (pH7.4) with 1% BSA, 0.02% Proclin300 and 50% Glycerol. Shipped at 4°C. Store at -20°C for one year. Avoid repeated freeze/thaw cycles.		
Background: ALG13 is a 1,137 amino acid protein belonging to the glycosyltransferase 28 family. Encoded by a gene that maps to human chromosome Xq23, ALG13 is a subunit of a bipartite UDP-N-acetylglucosamine transferase and plays a role in protein folding regulation and stabilization. ALG13 contains one OTU domain, one TudorSN domain, and exists as four alternatively spliced isoforms. Heterodimerizing with ALG14, ALG13 forms a UDP-GlcNAc glycosyltransferase, which catalyzes the second sugar addition of the oligosaccharide precursor in endoplasmic reticulum (ER) N-linked glycosylation. ALG13 localizes to ER and may be recruited to the cytosolic face of the membrane by interacting with ALG14.		

— VALIDATION IMAGES —

Tissue/cell: Rat stomach tissue; 4% Paraformaldehyde-fixed and paraffin-embedded; Antigen retrieval: citrate buffer (0.01M, pH 6.0), Boiling bathing for 15min; Block endogenous peroxidase by 3% Hydrogen peroxide for 30min; Blocking buffer (normal goat serum, C-0005) at 37°C for 20 min; Incubation: Anti-GLT28D1 Polyclonal Antibody, Unconjugated(bs-13380R) 1:200, overnight at 4°C, followed by conjugation to the secondary antibody(SP-0023) and DAB(C-0010) staining