

bs-13378R**[Primary Antibody]****COLGALT1 Rabbit pAb****Bioss**
ANTIBODIES

www.bioss.com.cn

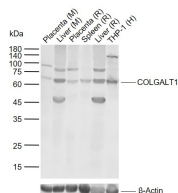
sales@bioss.com.cn

techsupport@bioss.com.cn

400-901-9800

— DATASHEET —

Host: Rabbit	Isotype: IgG	Applications: WB (1:500-2000) ICC/IF (1:50-200) ELISA (1:5000-10000)
Clonality: Polyclonal		
GeneID: 79709	SWISS: Q8NBJ5	
Target: COLGALT1		Reactivity: Human, Mouse, Rat
Immunogen: KLH conjugated synthetic peptide derived from human GLT25D1: 531-622/622.		
Purification: affinity purified by Protein A		Predicted MW.: 69 kDa
Concentration: 1mg/ml		Subcellular Location: Cytoplasm
Storage: 0.01M TBS (pH7.4) with 1% BSA, 0.02% Proclin300 and 50% Glycerol. Shipped at 4°C. Store at -20°C for one year. Avoid repeated freeze/thaw cycles.		
Background: GLT25D1 is a 622 amino acid protein that localizes to the lumen of the endoplasmic reticulum. Ubiquitously expressed with higher levels in placenta, heart, lung and spleen, GLT25D1 is a member of the glycosyltransferase 25 family. The beta-galactosyltransferase activity of GLT25D1 allows the transfer of beta-galactose to hydroxylysine residues of collagen. GLT25D1 is considered an important target for investigating the biological significance of collagen glycosylation and the importance of posttranslational modification in the etiology of connective tissue disorders. The gene encoding GLT25D1 is located on human chromosome 19, which consists of over 63 million bases, houses approximately 1,400 genes and is recognized for having the greatest gene density of the human chromosomes.		

— VALIDATION IMAGES —

Sample: Lane 1: Mouse Placenta tissue lysates
Lane 2: Mouse Liver tissue lysates Lane 3: Rat
Placenta tissue lysates Lane 4: Rat Spleen tissue
lysates Lane 5: Rat Liver tissue lysates Lane 6:
Human THP-1 cell lysates Primary: Anti-
COLGALT1 (bs-13378R) at 1/1000 dilution
Secondary: IRDye800CW Goat Anti-Rabbit IgG at
1/20000 dilution Predicted band size: 69 kDa
Observed band size: 68 kDa