

**bs-10156R****[ Primary Antibody ]****NOX5 Rabbit pAb****BioSS**  
**ANTIBODIES**

www.bioss.com.cn

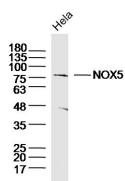
sales@bioss.com.cn

techsupport@bioss.com.cn

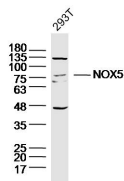
400-901-9800

**— DATASHEET —**

<b>Host:</b> Rabbit	<b>Isotype:</b> IgG	<b>Applications:</b> WB (1:500-2000)
<b>Clonality:</b> Polyclonal		<b>Reactivity:</b> Human
<b>GeneID:</b> 79400	<b>SWISS:</b> Q96PH1	
<b>Target:</b> NOX5		
<b>Immunogen:</b> KLH conjugated synthetic peptide derived from human NOX5: 501-600/765. < Cytoplasmic >		<b>Predicted MW.:</b> 84 kDa
<b>Purification:</b> affinity purified by Protein A		<b>Subcellular Location:</b> Cell membrane ,Cytoplasm
<b>Concentration:</b> 1mg/ml		
<b>Storage:</b> 0.01M TBS (pH7.4) with 1% BSA, 0.02% Proclin300 and 50% Glycerol. Shipped at 4°C. Store at -20°C for one year. Avoid repeated freeze/thaw cycles.		
<b>Background:</b> Calcium-dependent NADPH oxidase that generates superoxide. Also functions as a calcium-dependent proton channel and may regulate redox-dependent processes in lymphocytes and spermatozoa. May play a role in cell growth and apoptosis.		

**— VALIDATION IMAGES —**

Sample: HeLa Cell (Human) Lysate at 30 ug  
Primary: Anti-NOX5 (bs-10156R) at 1/300 dilution  
Secondary: IRDye800CW Goat Anti-Rabbit IgG at 1/20000 dilution  
Predicted band size: 84kD  
Observed band size: 84kD



Sample: 293T Cell (Human) Lysate at 30 ug  
Primary: Anti-NOX5 (bs-10156R) at 1/300 dilution  
Secondary: IRDye800CW Goat Anti-Rabbit IgG at 1/20000 dilution  
Predicted band size: 84kD  
Observed band size: 84kD